

New Orleans Elevation by neighborhood with major roads

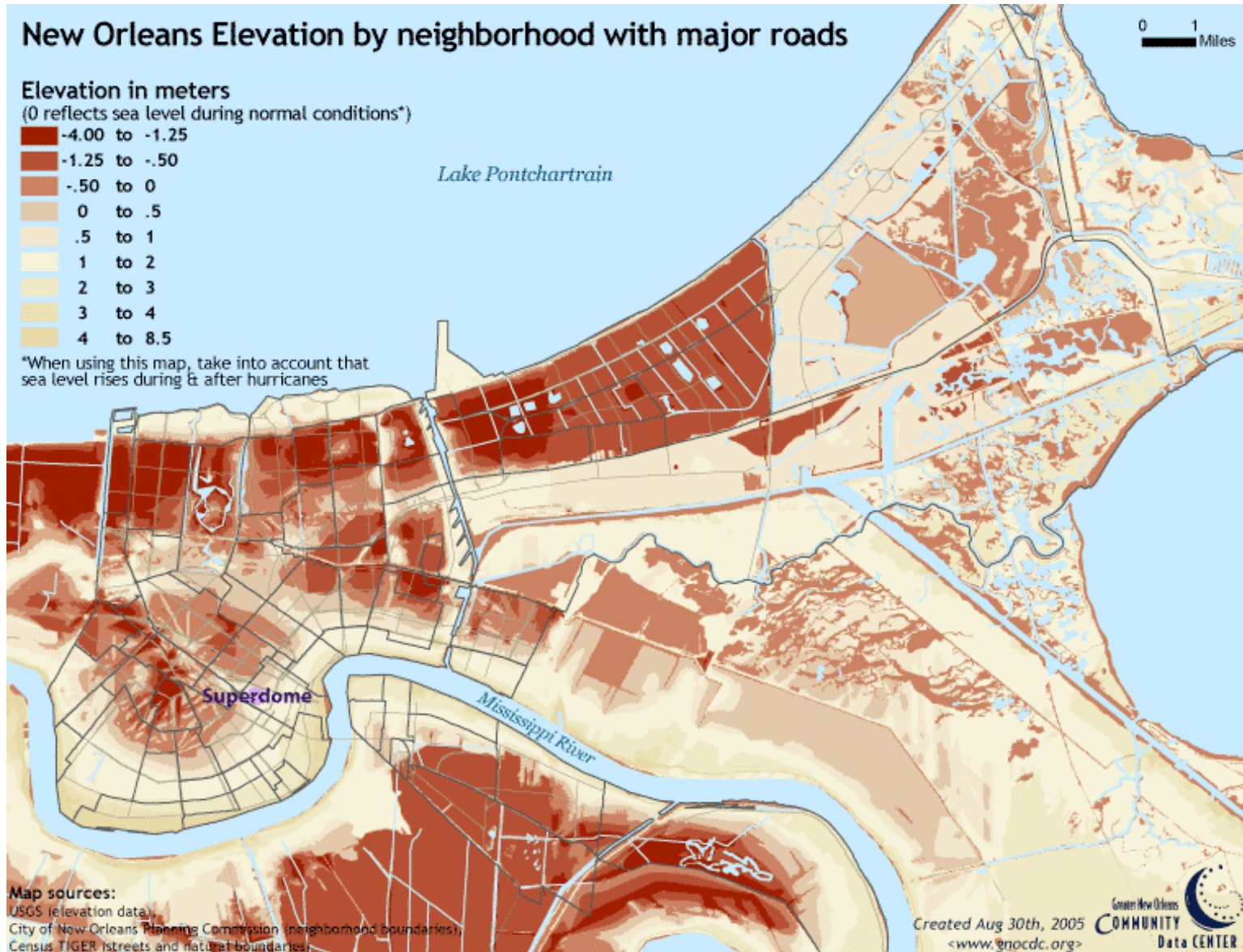
0 1 Miles

Elevation in meters

(0 reflects sea level during normal conditions*)

- 4.00 to -1.25
- 1.25 to -.50
- .50 to 0
- 0 to .5
- .5 to 1
- 1 to 2
- 2 to 3
- 3 to 4
- 4 to 8.5

*When using this map, take into account that sea level rises during & after hurricanes



Map sources:

USGS (elevation data),
City of New Orleans Planning Commission (neighborhood boundaries),
Census TIGER (streets and natural boundaries)

Created Aug 30th, 2005
<www.gnocdc.org>



<http://www.flickr.com/photos/maitri/2232651989/>