

Urban EcoLab Curriculum

<http://www.urbanecolabcurriculum.com>



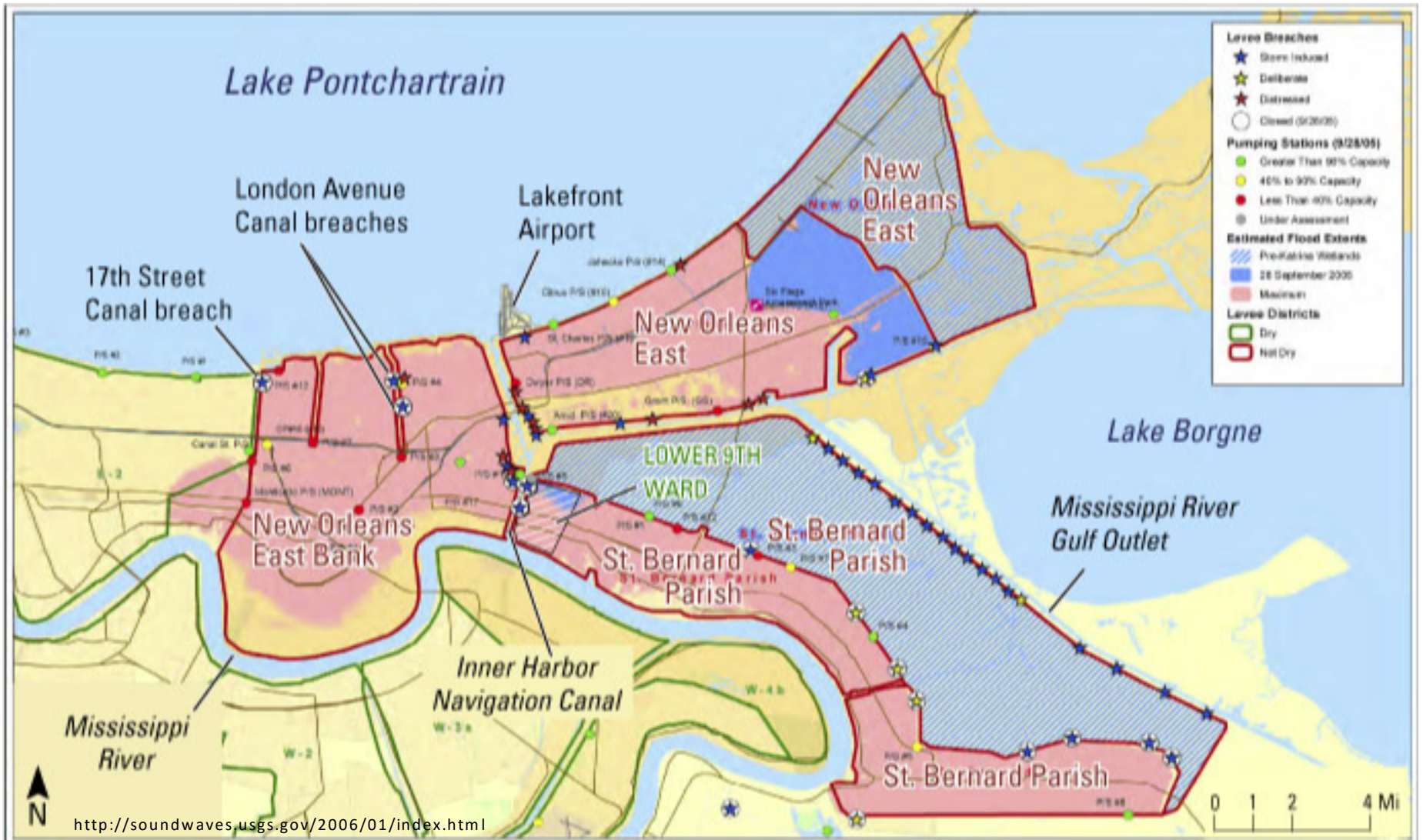
New Orleans A case study

Module 2, Lesson 2

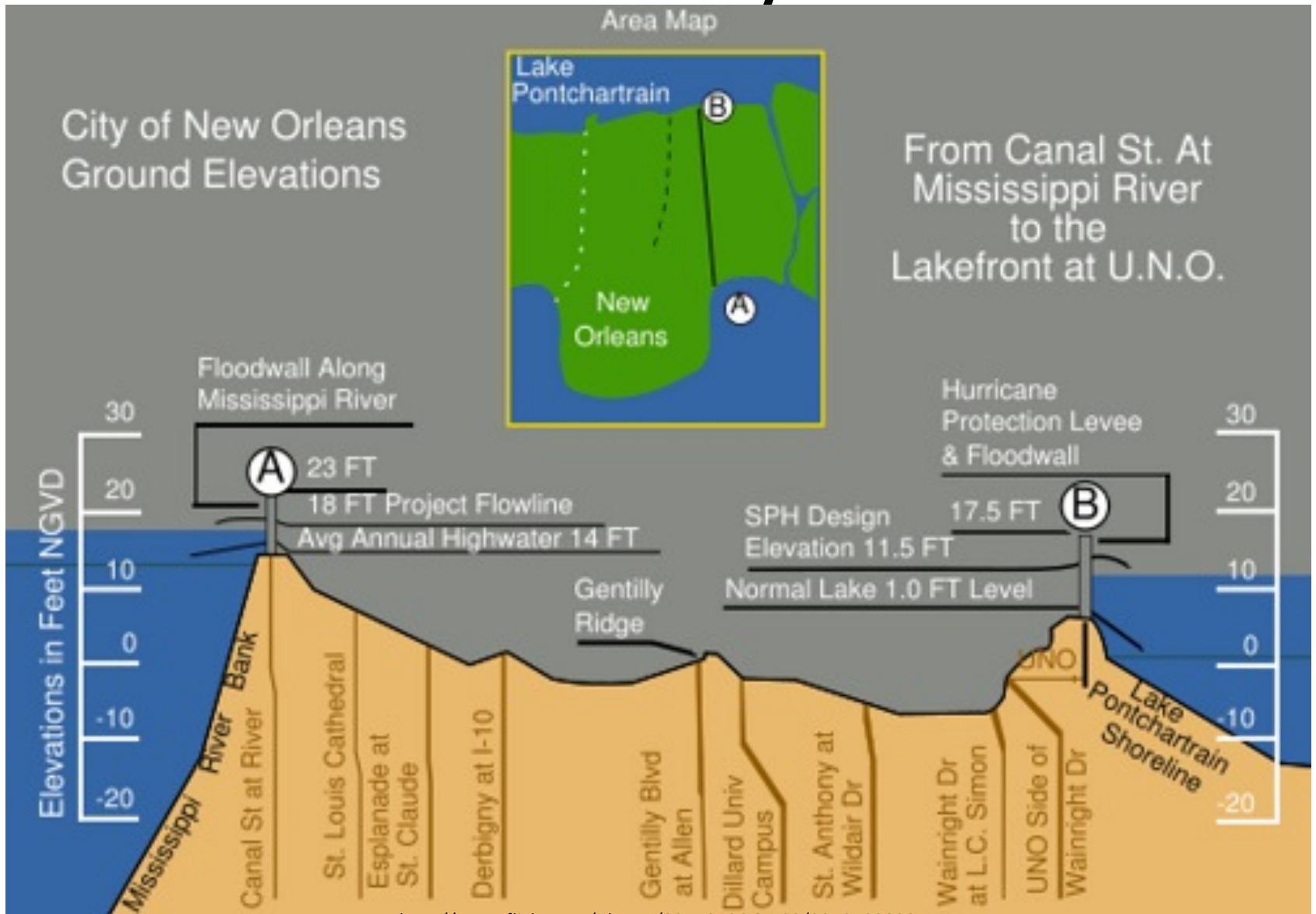


This material is based on work supported by the National Science Foundation ("NSF") under Grant No. 0607010. Any opinions, findings, and conclusions or recommendations expressed in this material are those of the authors and do not necessarily reflect the views of the National Science Foundation.

Location



The Levee System



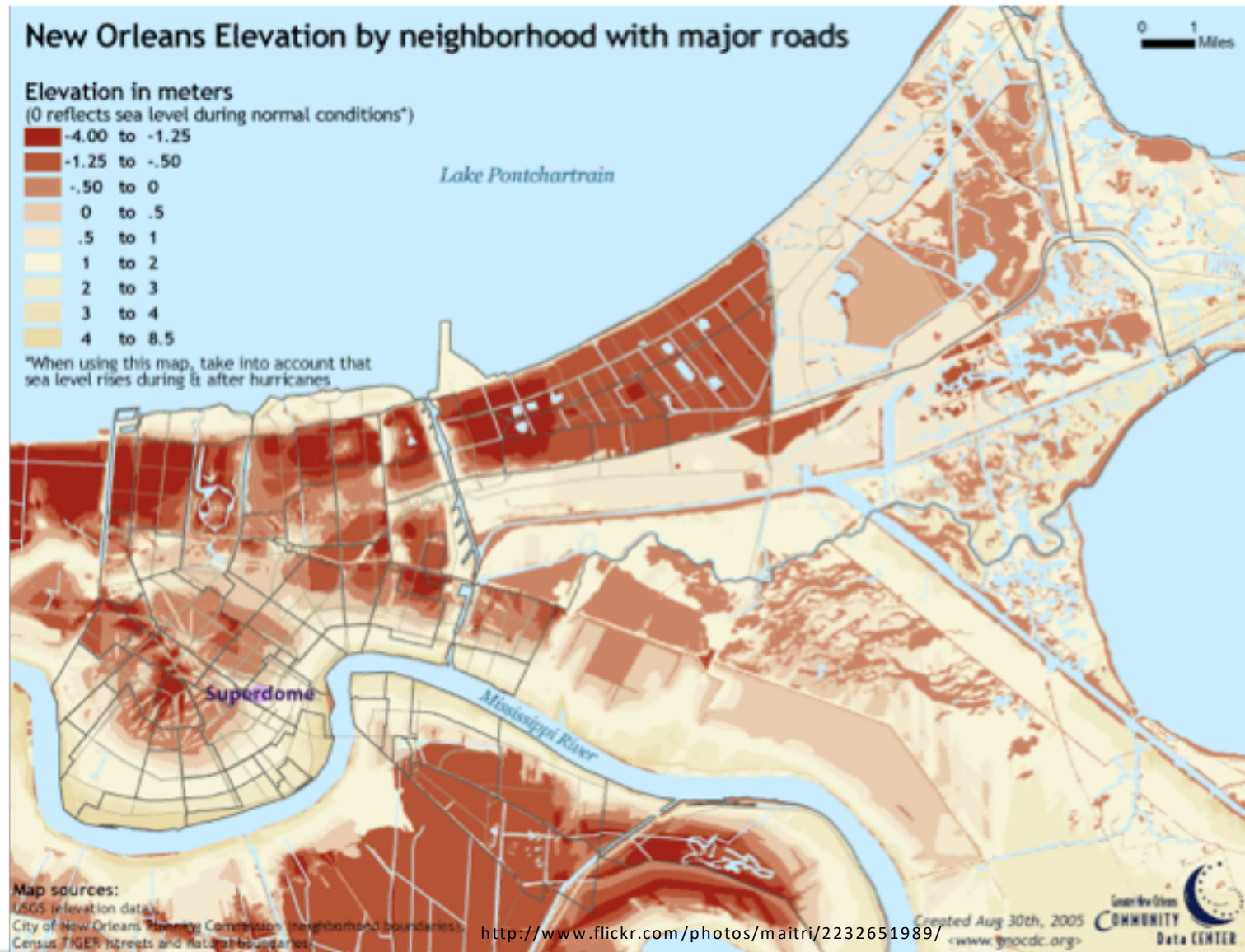
<http://www.flickr.com/photos/33470786@N03/3210709838>

/

Question

- Why would people decide to build a city in an area that is below sea level? What is driving this type of land use policy?

Elevations – New Orleans



How is the Population density distributed?



Red – Caucasian
Blue- African Am.
Green – Asian
Orange – Hispanic
Yellow - Other

<http://www.flickr.com/photos/walkingsf/5425773046/>

Hurricanes and New Orleans



http://commons.wikimedia.org/wiki/File:Hurricanes_Category_3_or_greater_within_100_miles_of_New_Orleans.jpg