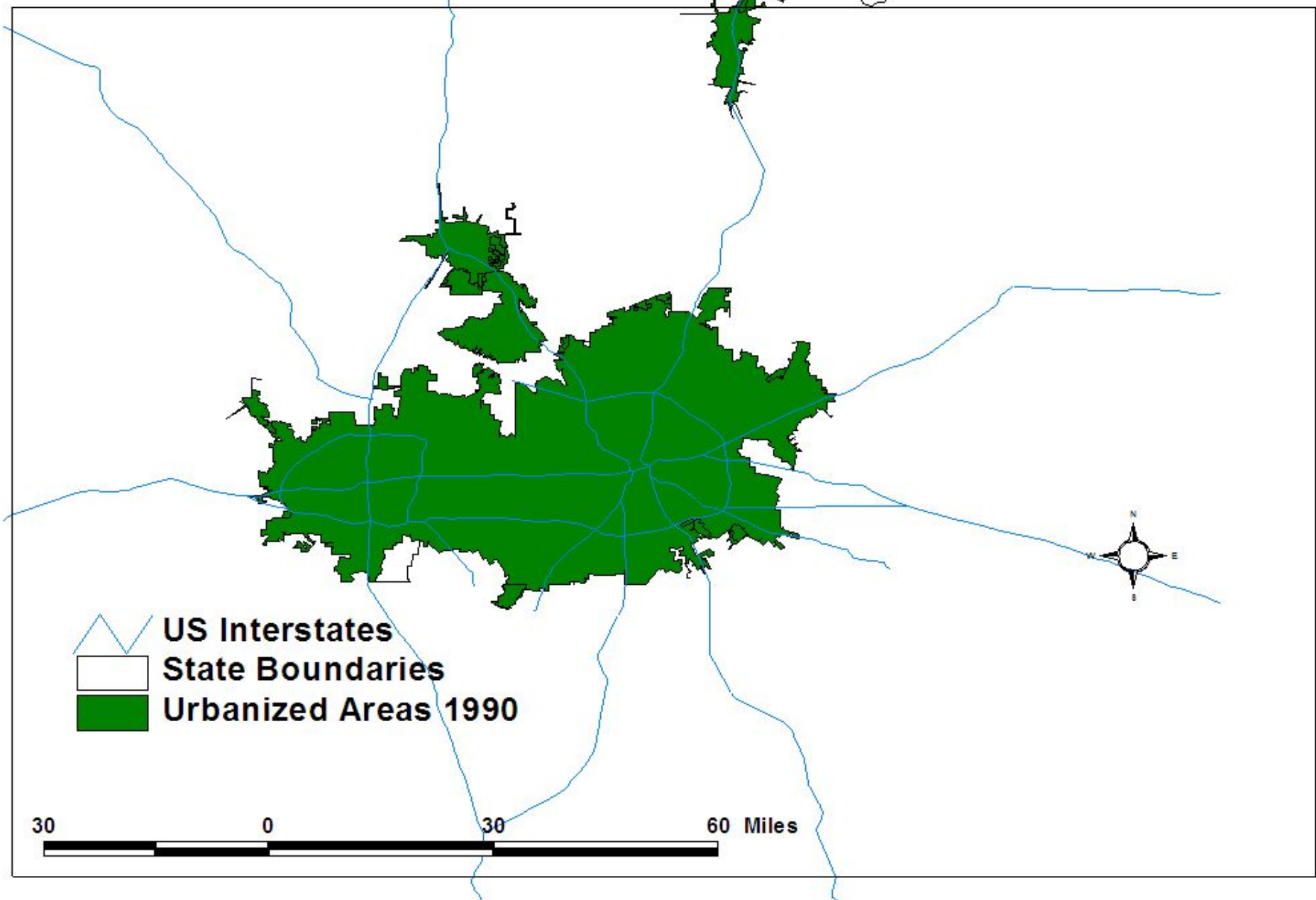
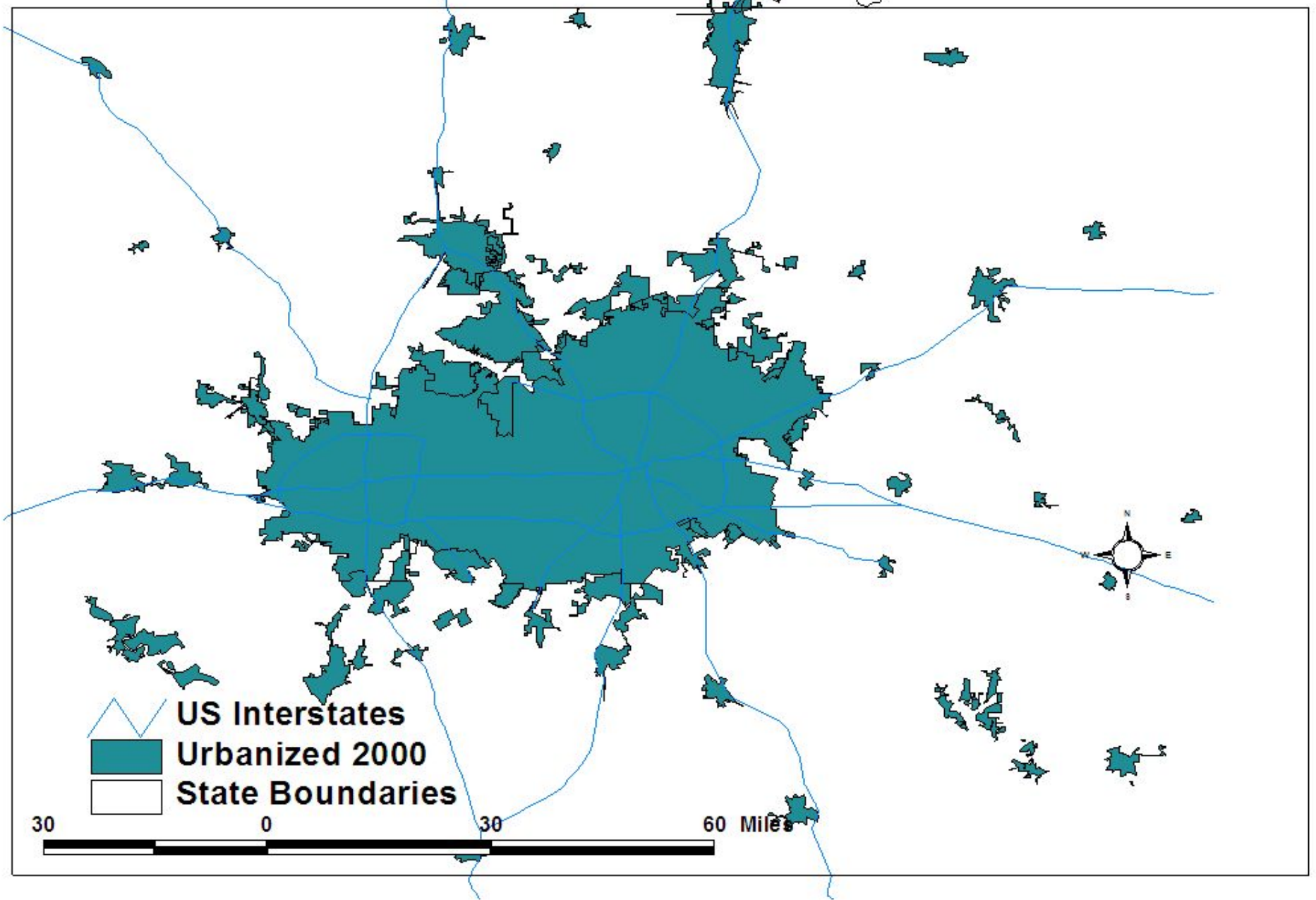


Dallas and Urban Sprawl

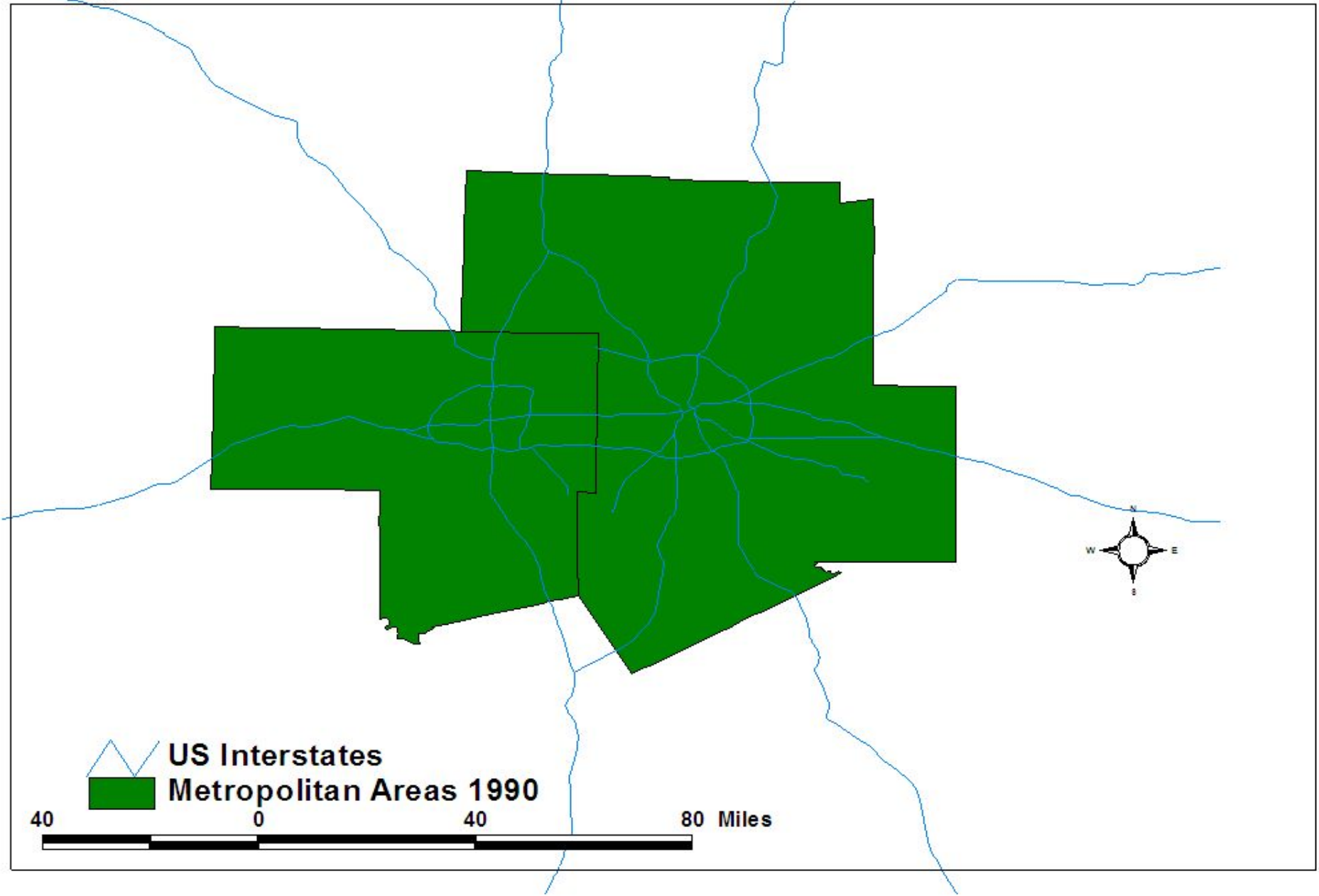
Dallas Urbanized Area 1990



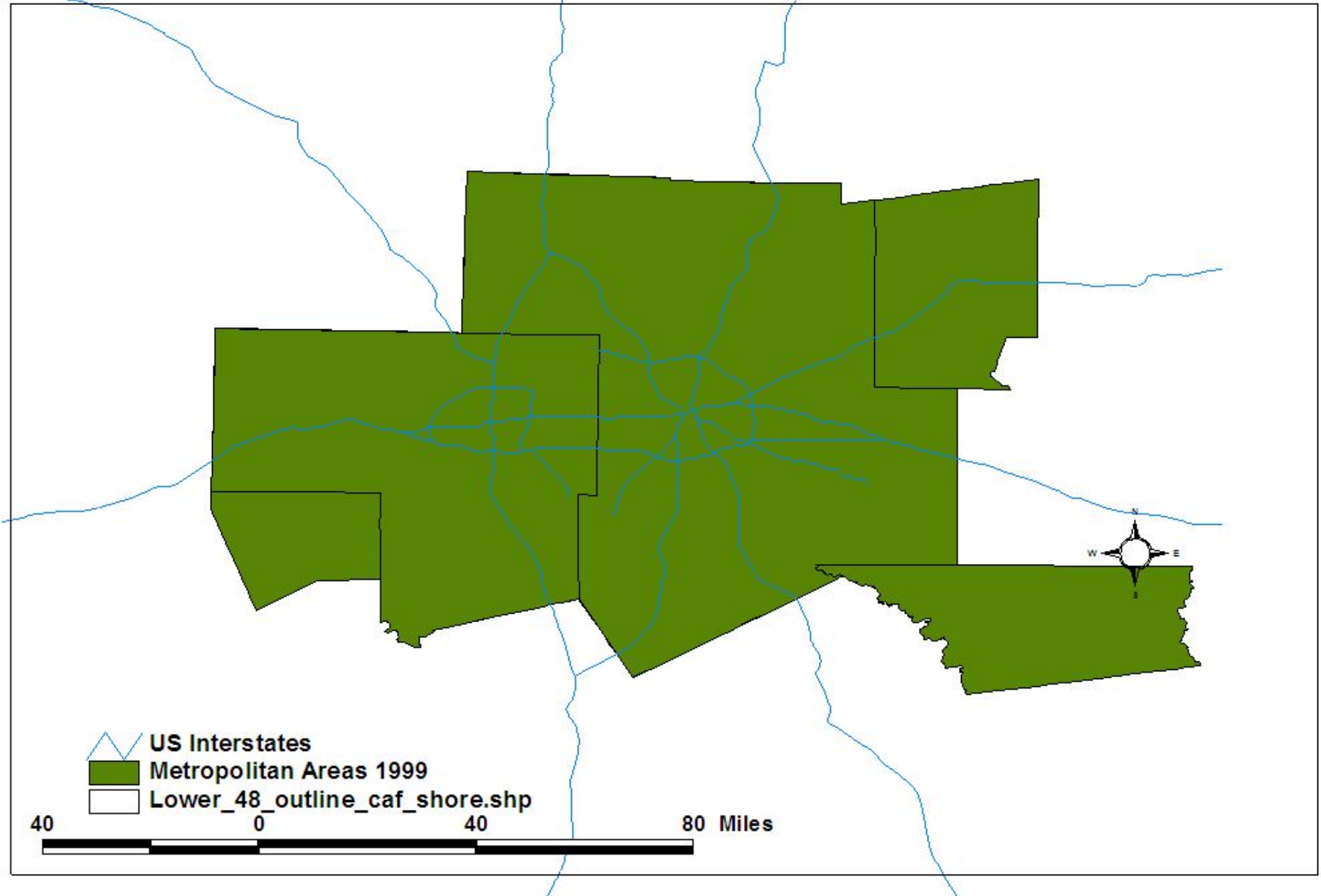
Dallas Urbanized Area 2000



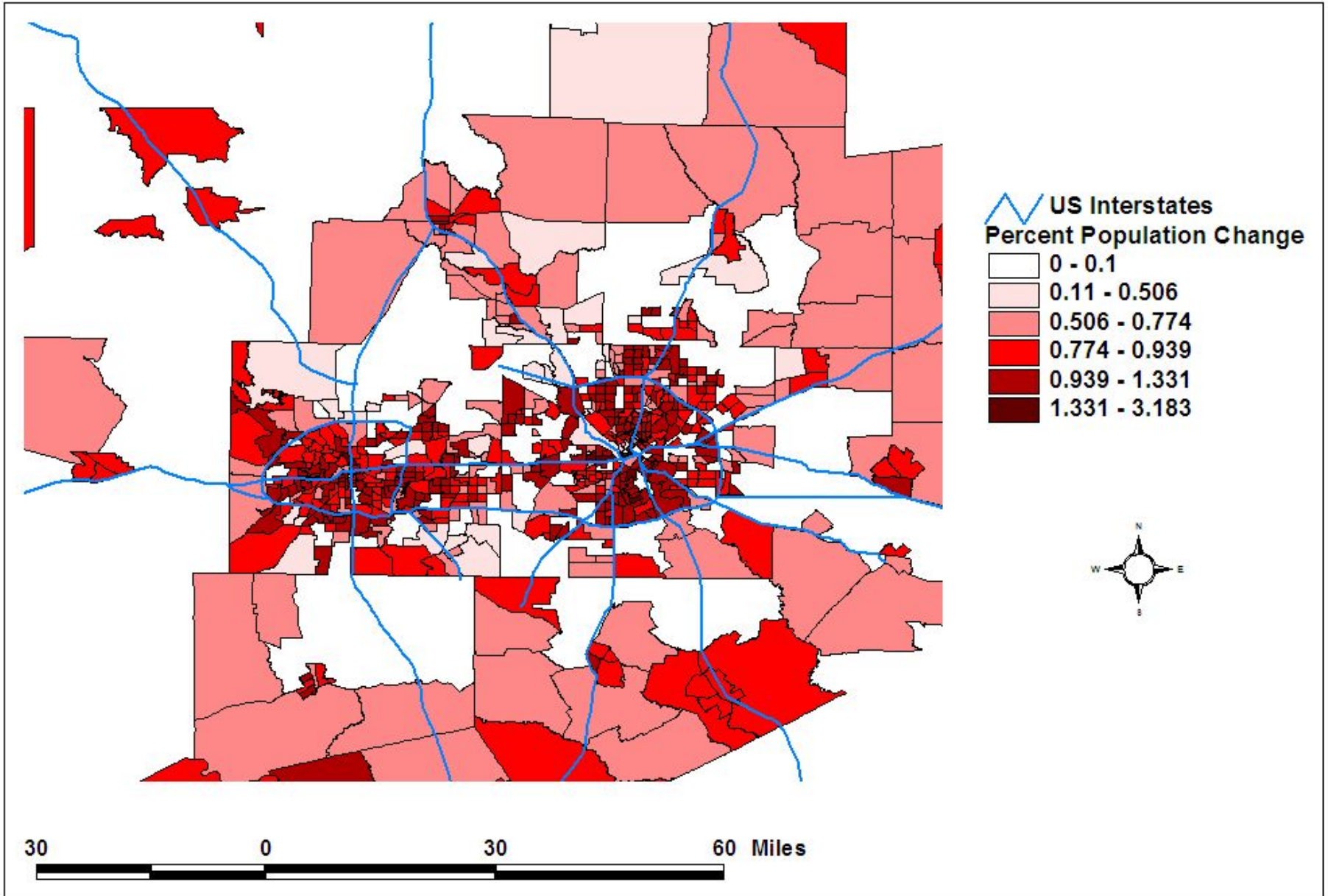
Dallas Metropolitan Area 1990



Dallas Metropolitan Area 2000



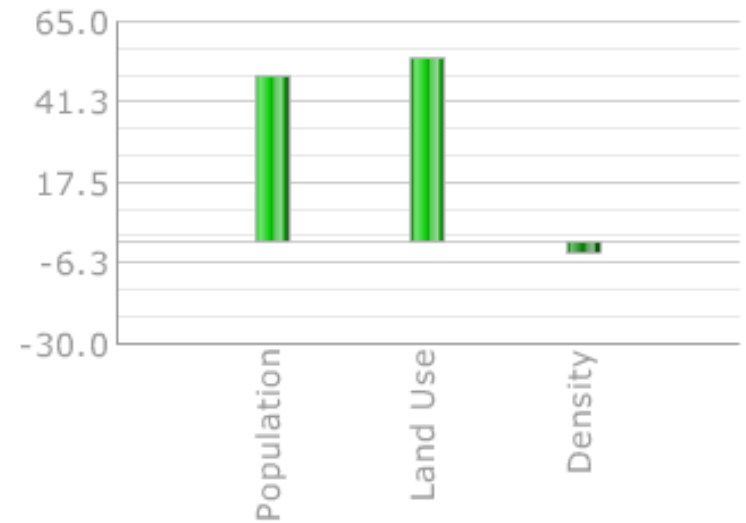
Change in Population (%): Dallas 1990 - 2000



About Dallas-Fort Worth

- With 5.2 million residents, the Dallas-Fort Worth was the ninth largest metropolitan area in the United States in 2000, just behind Detroit and ahead of Houston.

Dallas-Fort Worth-Arlington, TX
Percent Changes



About Dallas-Fort Worth

- It grew by about 30 percent in the 1990s, adding about as many people as Atlanta (nearly 1.2 million)
 - About 4.8 million of the residents
- Its density increased only slightly to 3.3 persons per urbanized acre between 1982 and 1997.
 - And although its density rank went from 39th to 33rd among largest metros, it still remains **very low** for such a large metro area.