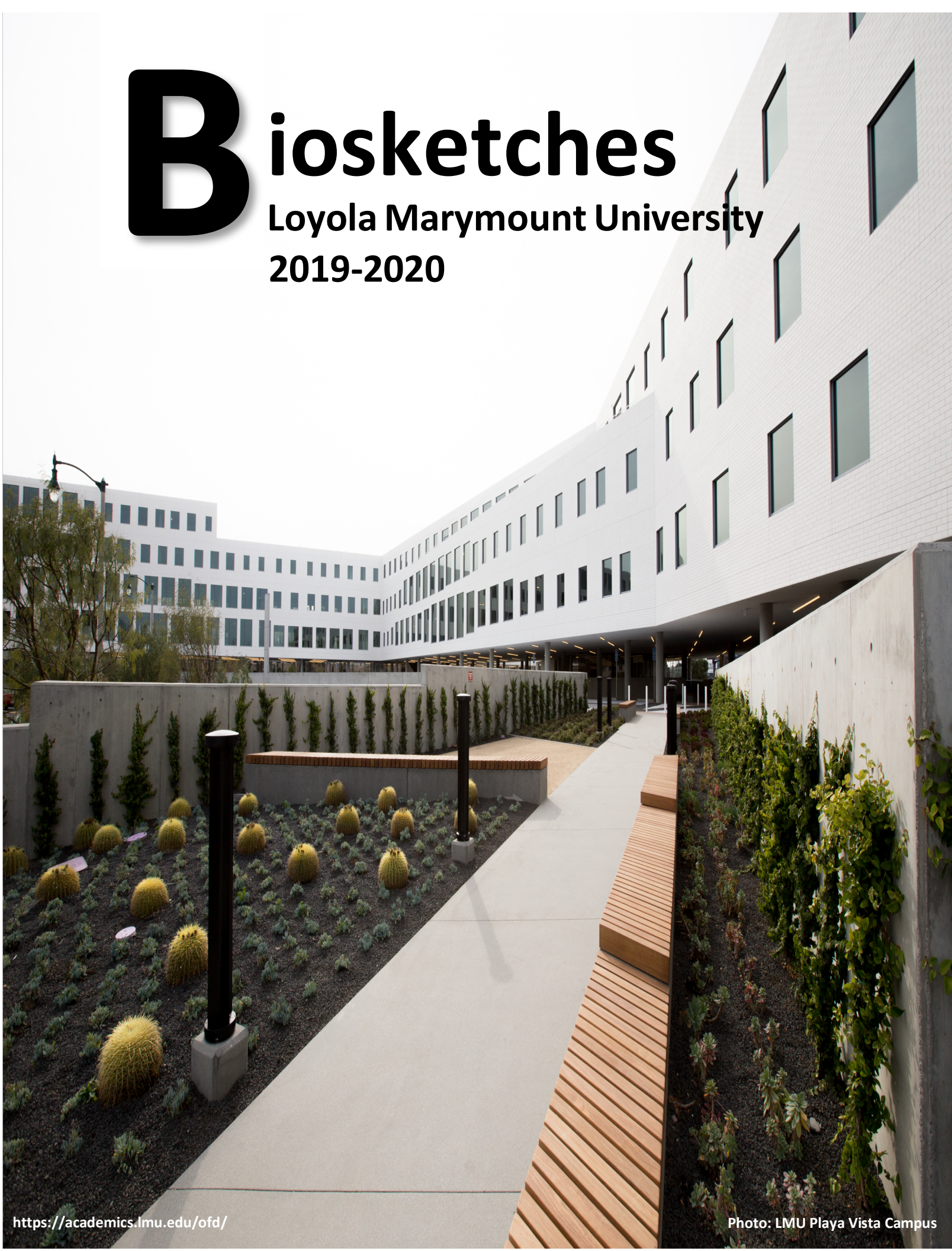


# Biosketches

Loyola Marymount University  
2019-2020





# Loyola Marymount University

## NEW FACULTY 2019-2020: BIOSKETCHES



### TO THE LOYOLA MARYMOUNT COMMUNITY:

I am pleased to introduce our new faculty colleagues for the 2019-2020 academic year. Our 33 new tenure-line faculty and 23 visiting and clinical faculty bring a breadth of expertise and life experience, further extending the intellectualism and creativity of our highly esteemed and world-class faculty community.

Reflecting back to your first year as faculty or as staff members, you may recall the excitement of meeting new people, the thrill of navigating a new campus and culture, and the optimism for accomplishing the goals you set for yourselves. Let us embrace them by inviting them into our offices, welcoming their ideas, hearing their voices, and lending a helping hand. This way, we not only embolden our faculty, we enliven the LMU Community as we encourage learning, educate the whole person, and lead lives in the service of faith and the promotion of justice.

I look forward to working with all of you. May your 2019-2020 year be filled with new friendships, fresh ideas, and exciting opportunities for growth and renewal.

Sincerely,

A handwritten signature in black ink, which appears to read "Thomas Poon". The signature is fluid and cursive, with the first and last names being more prominent.

Thomas Poon, Ph.D.  
Executive Vice President and Provost



# Tenure-Line Faculty

## Bellarmino College of Liberal Arts

**ROBERTO CANCIO****Assistant Professor*****Sociology***

Professor Roberto Cancio received his B.A. in American Studies from UC Berkeley and both M.A. and Ph.D. in Sociology from the University of Miami. In the past two years, he has served as a Postdoctoral Fellow at LMU's Psychology Applied Research Center. As a researcher, Dr. Cancio has focused on the intersection between the social, behavioral mechanisms, and pathways underpinning resilience and susceptibility to adverse mental health conditions that disproportionately affect racial and ethnic priority veteran populations and the impact of racism and discrimination on health behavior and strategies for military families. Concurrently, Dr. Cancio contributes to the design and implementation of community-based research that takes into account how culture, context, affect a wide range of health, functioning, and quality-of life outcomes for under-resourced communities of color. Dr. Cancio has worked on multiple projects focused on issues surrounding public health and mental health disparities, juvenile justice, adolescent alcohol and drug prevention, homelessness, community organizing, and civic engagement. He has assisted in the development, implementation, and evaluation of various projects with the American Civil Liberties Union, Southern District of Florida, Community Coalition, the Nippon Foundation, and Social Model Recovery Services.

**MARCELA GARCIA****Associate Professor*****Philosophy***

Professor Marcela García was born and raised in Mexico City. She earned a B.A. in Philosophy at the University of Navarra, Spain. She received her Ph.D. in

Philosophy in 2008 from the Ludwig-Maximilians-

Universität München, Germany, where she then worked as assistant professor. In 2012, she returned to Mexico to teach at Universidad Iberoamericana. From 2014 to 2016, she was a full-time research fellow at the Institute for philosophical research in Mexico's National University (UNAM). Before coming to LMU, she was a researcher and professor at UNAM and at Universidad Michoacán in Morelia, Mexico, where she coordinated the Ph.D. in Philosophy program. Professor García's work centers on two main areas of philosophy, one historical and one systematic, with intersecting questions. One main focus is German idealism, particularly the philosophy of the late Schelling and discussions regarding freedom, life, human activity, reality and the limits of reason. Her other area of specialization is ontology, specifically discussions on what it is to be and to exist, and the degree to which our concepts can grasp actual being. Professor García has published extensively on these topics in German, English and Spanish. She is a member of the editorial board of the academic journals *Philosophisches Jahrbuch* and *Tópicos Revista de filosofía*. She is currently working on a book project on the late Schelling's reception of Aristotelian metaphysics.

**TYLER HARLAN****Assistant Professor*****Urban and Environmental Studies***

Professor Tyler Harlan earned his B.A. in Anthropology and East Asian studies from Vanderbilt University, and his M.Phil. in Resource Management & Geography from the

University of Melbourne. He received his Ph.D. in Geography from UCLA. He joins LMU from Cornell University, where he was a postdoctoral fellow in sustainability. Professor Harlan researches the political economy and uneven socio-environmental impacts of China's green development transformation, and the implications of this transformation for other industrializing countries. His fieldwork has taken him all over China and Southeast Asia - from remote villages on the Laotian border, to the Ministry of Foreign Affairs in Beijing. He has published several recent articles on hydropower and renewable energy in China.



**KIM HARRIS****Assistant Professor  
Theological Studies**

Professor Kim R. Harris holds a Ph.D. in Worship and the Arts from Union Theological Seminary in the City of New York. Professor Harris is a member of the Black

Catholic Theological Symposium, North American Academy of Liturgy and a clinician for GIA Publications Inc. While pursuing her Ph.D., she composed *Welcome Table: A Mass of Spirituals*. *Welcome Table* is a featured Mass setting in the second edition of the Black Catholic hymnal, *Lead Me Guide Me* (GIA Publications Inc.). Professor Harris' current research concerns the trans-national history of Black Catholic liturgy. Her next musical composition will address the need to expand the available liturgical resources for Black Catholic inspired worship.

**SWARUP JOSHI****Assistant Professor  
Economics**

Professor Swarup Joshi earned his Ph.D. in Economics from Louisiana State University. Before that, he completed his B.S. in Finance with minors in Accounting and Mathematics

from Southeastern Louisiana University. He is an applied micro-economist. His research primarily lies in Education economics, Crime economics, Political economics, and Health economics.

**GABRIELE MAGNI****Assistant Professor  
Political Science**

Professor Gabriele Magni earned his M.A. and Ph.D. in Political Science from the University of North Carolina at Chapel Hill.

Before coming to LMU, he was a

Postdoctoral Research Fellow at Princeton University. He grew up in Italy, where he received a B.A. from the University of Milan and an M.A. from the University of Bologna. He has also lived and studied in Spain and the UK. His research lies at the intersection of political economy and political psychology and explores how economic anxiety and inequality influence policy

preferences and political behavior. He studies these topics combining analysis of survey data and economic indicators with survey and audit experiments. In another stream of his work, he examines the political representation of LGBTQ people and attitudes toward LGBTI rights.

**CHRISTOPHER PATRICK MILLER****Assistant Professor  
Theological Studies**

Professor Christopher Patrick Miller completed his B.S. in Accounting at Loyola Marymount University, an M.A. in Comparative Theology at

Loyola Marymount University, an M.A. in Religious Studies at the University of California, Davis, and a Ph.D. in Religious Studies at the University of California, Davis. He previously served as Clinical Professor of Yoga Studies at Loyola Marymount University, where he now serves as the Bhagwan Mallinath Assistant Professor of Jainism in the Department of Theological Studies. His current research focuses upon the ways in which yoga practices are translated into transnational modern yoga communities. He is the author of a number of articles and book chapters concerned with Jainism and Ecology, the history and practice of modern yoga, yoga and politics, and yoga philosophy.

**CATHERINE PETERS****Assistant Professor  
Philosophy**

Professor Catherine Peters earned her Ph.D. in Philosophy from the Center for Thomistic Studies at the University of St. Thomas in Houston, TX. Her area of specialization is medieval philosophy, with a

particular focus on medieval Arabic thought. In 2018, she was named the American Catholic Philosophical Association "Young Scholar," an award given to the best paper submitted by a scholar under the age of 35. In the last year, Dr. Peters has presented at the *Symposium Thomisticum* in Athens, Greece and the International Medieval Studies Congress in Kalamazoo, MI. Dr. Peters was recently elected to the executive council of the ACPA and will serve a three year term.





**NANCY PINEDA-MADRID**  
**T. Marie Chilton**  
**Chair of Catholic Theology**  
**Associate Professor**  
**Theological Studies**

Nancy Pineda-Madrid has more than 17 years of

experience as a theologian having served as a professor at Boston College for 14 years (2005-2019) and at St. Mary's College (Moraga, CA) for 3 years (2002-2005). In the fall of 2019, she begins her tenure as LMU's T. Marie Chilton Chair of Catholic Theology. She holds a Ph.D. in Systematic and Philosophical Theology from the Graduate Theological Union (Berkeley, California), a Master of Divinity from Seattle University, and a B.A. from Loyola Marymount University. She is the first theologian to publish a book on the evil of femicide arguing that this tragedy demands a fresh consideration of what salvation means (*Suffering and Salvation in Ciudad Juárez*, Fortress Press, 2011). In addition, she has co-edited two books, *Hope: Promise, Possibility and Fulfillment*, (Paulist Press, 2013) and, *The Holy Spirit: Setting the World on Fire*, (Paulist Press, 2017). In the spring of 2019, she gave the celebrated Madeleva Lecture titled, "Theologizing in an Insurgent Key, Subverting Violence Against Women." She has published numerous articles addressing questions of soteriology, suffering, religious symbols, popular Catholicism, and Latina feminist theology. In addition to English, she is published in four languages: German, Spanish, Italian, and Portuguese. She has given public lectures at several universities across the United States as well as in Mexico, Argentina, Brazil, El Salvador, India, Austria, and Germany. She is currently working on a book length feminist theological interpretation of Our Lady of Guadalupe as a religious symbol. She is former President of the Academy of Catholic Hispanic Theologians of the United States (ACHTUS), and former Vice President of the International Network of Societies of Catholic Theology (INSeCT). Among the many awards her work has received, the Catholic Theological Society of America (CTSA) awarded her their 2018 Ann O'Hara Graff Memorial Award. She now lives in Los Angeles, California with her husband Larry Gordon.



**KONSTANTIN PLATONOV**  
**Assistant Professor**  
**Economics**

Professor Konstantin Platonov holds a PhD degree in Economics from the University of California Los Angeles. His research interests lie within macroeconomics. His work connects

macroeconomic outcomes with volatile market psychology (sudden shifts in people's beliefs, sentiments and confidence, broadly known as 'animal spirits'). His novel approach unveils original explanation for multiple phenomena, such as financial crises and long-lasting recessions, dynamics of international capital flows and foreign exchange rates. His findings were recently published in the European Economic Review. Professor Platonov has participated in numerous international conferences, including sessions organized by the Bank of England and the European Central Bank. He has also taught economics at many institutions and various summer schools. He holds a Master's degree from UCLA, and a Bachelor's and Master's degrees from the National Research University Higher School of Economics in Moscow.



**DIANA SANTACROSE**  
**Assistant Professor**  
**Psychology**

Professor Diana Santacrose earned her B.S. in Human Development from Cornell University. She received her Ph.D. in Counseling, Clinical and

School Psychology, specializing in the Clinical Psychology track at the University of California, Santa Barbara. Professor Santacrose completed her clinical internship in the Stress, Trauma, and Resilience track at UCLA Semel Institute for Neuroscience and Human Behavior. Professor Santacrose recently completed a Child Clinical Psychology Postdoctoral Fellowship at UCLA Semel Institute for Neuroscience and Human Behavior with the UCLA Child Anxiety Resilience Education Support Center and UCLA TIES for Families, where she spent the 2018-2019 academic year specializing in prevention and intervention dissemination and research to address pediatric anxiety, trauma, and youth in the foster care system. Professor Santacrose received specialized clinical and research training in the prevention and treatment of traumatic stress among children and families while at UCSB and UCLA. Professor Santacrose worked on two NICHD-funded



projects that focused on using community-based participatory research approaches to understand and address violence-related health disparities in Latinx communities. Prior to pursuing a doctoral degree, Professor Santacrose gained experience doing longitudinal research to study developmental psychopathology and cognitive development among diverse populations while working at the University of Rochester and Cornell University. Professor Santacrose is interested in drawing on cultural and family strengths that promote resilience and buffer the impact of stress and adversity. Her research focuses on addressing health disparities among vulnerable populations using community-based participatory research approaches to develop and evaluate trauma-informed and culturally sensitive preventions. She co-authored "Using community based participatory research and human centered design to address violence-related health disparities among Latino/a youth" with Maryam Kia-Keating, Sabrina Liu and Jessica Adams. Additionally, Professor Santacrose has published on the topics of ethical considerations of using participatory photography in community-based participatory research with youth.

ADHD in peer-reviewed publications. Dr. Sturm was awarded the Autism Secondary Data Analysis Research Program grant by MCHB in the Health Resources and Services Administration to study disparities in access to special education services for children with autism this year within educational settings.



**ERIC SWANSON**

**Assistant Professor**  
***Theological Studies***

Professor Eric Haruki Swanson earned his B.A. in Religious Studies from Indiana University Bloomington and his M.A. in esoteric Buddhist studies from Koyasan University in Japan. He received his Ph.D. in East Asian religion from Harvard University. His research focuses on examining how religious traditions of Japan formulated notions of social order and is interested in exploring a broad range of religious literature, visual material, and ritual practices in terms of their larger implications within cultural patterns, political pressures and agendas, and expressions of identity.



**ALEX STURM**

**Assistant Professor**  
***Psychology***

Professor Alexandra Sturm earned her B.S. in Brain and Cognitive Sciences from Massachusetts Institute of Technology in Cambridge, MA. Professor Sturm received her M.A and Ph.D. in Human Development and Psychology in the Department of Education at University of California, Los Angeles. She was a postdoctoral scholar at the Center for Autism Research and Treatment and the National Center for Research on Evaluation, Standards, and Student Testing at UCLA. Dr. Sturm's research focuses on neurodevelopmental disorders, namely ADHD and autism spectrum disorders, and psychometrics and aims to determine how behavioral phenotype and transdiagnostic features affect (1) measurement of symptom presentation and (2) efficacy of executive function intervention implementation in these populations. During fellowship, Dr. Sturm also co-developed a behavioral intervention for youth with executive functioning deficits. She has published widely on the topics of autism spectrum disorders and

## College of Business Administration



**DOMINIQUE BRAXTON**

**Assistant Professor**  
***Marketing & Business Law***

Professor Dominique Braxton earned her B.S. in Marketing from the University of Nevada, Las Vegas and her Ph.D. in Marketing from the University of California, Irvine. In addition to working as a research and teaching assistant during her studies at UCI, she also served as the student coordinator for the development and implementation of a behavioral lab for experimental studies. Her primary research interests include consumer responses to technology in retailing and customer experiences. In particular, she uses experimental research methods to understand how consumers use technology in their shopping experiences, and how different aspects of online and offline retail environments impact customer experience.



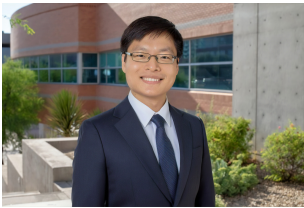


**MOSTAFA MESGARI**

**Assistant Professor  
Finance/CSE Interdisciplinary**

Professor Mostafa Mesgari received his Ph.D. degree in Business Administration from Concordia University, Montreal,

Canada, in 2016. He was an Assistant Professor of Information Systems at Elon University, North Carolina. His research interests include data analytics, open communities, and human-computer interaction. He explores novel data-driven methodologies to study the socio-technical aspects of information systems in organizations. His work has appeared in leading outlets including European Journal of Information Systems, IEEE Transactions on Software Engineering, Journal of the Association for Information Science and Technology, and Information Processing & Management. Before entering academia, he worked as a computer systems analyst.



**ZHEN TANG**

**Assistant Professor  
Business Analytics**

Professor Zhen Tang, who also goes by Richard, is from Huaiyuan, a beautiful one-

million-population small town in eastern China. Though Richard wanted to be a computer engineer when he was in high school, he graduated from East China University of Science and Technology with B.A. and M.S. in Business Administration. He then earned his Ph.D. in Marketing from the University of Arizona. He is interested in two research topics: one is about how to design an organization's structure to make the employees be both productive and happy; the other one is about how to adapt an organization's structure to realize the full potential of technological innovations like business analytics. Richard's teaching interests include business analytics, marketing strategy, and introduction to marketing. In his life, Richard enjoys many sports, talking with people, and cooking.



**MADHU VISWANATHAN**

**Professor  
Business Ethics**

Professor Madhu Viswanathan earned Bachelor's (Mechanical Engineering, IIT, Madras, India, 1985), and doctoral (Marketing,

University of Minnesota, 1990) degrees. He joins Loyola Marymount University after being on the faculty at the University of Illinois, Urbana-Champaign for 29 years. His research programs are on measurement and subsistence marketplaces, where he has authored several books including *Measurement Error and Research Design* (Sage, 2005), *Enabling Consumer and Entrepreneurial Literacy in Subsistence Marketplaces* (Springer, 2008), *Subsistence Marketplaces* (ebookpartnerships, 2013), and *Bottom-Up Enterprise* (ebookpartnerships, 2016). He has pioneered the area of subsistence marketplaces, with a bottom-up approach to the intersection of poverty and marketplaces ([www.business.illinois.edu/subsistence](http://www.business.illinois.edu/subsistence)). He taught courses on research methods, subsistence, and sustainability, educational experiences on the latter, reaching almost a thousand students a year at the University of Illinois, and tens of thousands of students around the world through Coursera. He founded and directs the *Marketplace Literacy Project* ([www.marketplaceliteracy.org](http://www.marketplaceliteracy.org)), pioneering the design and delivery of marketplace literacy education to subsistence marketplaces. With partners and ongoing programs in India, Tanzania, Uganda, Kenya, Argentina, Honduras, Mexico, and Illinois, approximately 100,000 women have received marketplace literacy education. He has received numerous awards and served on the Livelihoods Advisory Board of UNHCR.



**AU VO**

**Assistant Professor  
Finance/CSE Interdisciplinary**

The expertise of Dr. Au Vo are data mining, spatial analytics, and big data machine learning, especially in the healthcare informatics domain. With a transdisciplinary approach to his work,

he continually seeks ways to integrate and augment different domains' strengths in order to bridge the gap between practice and theory and solve the most pressing problems. His research work has been featured in several premier journals in Information Systems such as Decision Support Systems, Information Systems Frontiers, and Journal of Computer Information Systems. He has



consulted and worked in various fields, including online advertising, manufacturing, hospitality, and healthcare. In addition, he holds several well-regarded professional certifications, one of which is the Project Management Professional (PMP®) and the Amazon Web Services (AWS) Solution Architect.

**NOHEL ZAMAN**

**Assistant Professor  
Finance/CIS**

Professor Nohel Zaman is an Assistant Professor in the Department of Information Systems and Business Analytics at Loyola Marymount University. His

research focuses on social media interactions of consumers. Specifically, he investigates defect existence in online reviews across multiple industries, and discovers hospital quality issues from online reviews of patients. He also focuses on identifying product safety concerns across diverse product categories. He received a Ph.D. in Business Information Technology from Virginia Tech. Additionally, he holds a Bachelor of Science degree in Business Administration along with a M.Sc. degree in Economics from the University of Texas at Dallas, and a M.Sc. degree in Computational Science and Engineering (concentrated in healthcare information systems) from the North Carolina A&T State University. Nohel Zaman is a PhD candidate in the Department of Business Information Technology (BIT) at the Pamplin College of Business, Virginia Tech.

## COLLEGE OF FINE ARTS

**T.J. HARPER**

**Associate Professor  
Music**

Professor T. J. Harper earned the Bachelor of Arts from CSU, Fresno, a Master of Arts from CSU, Northridge and the Doctor

of Musical Arts from University of Southern California. After 10 years teaching in New England, he is excited to return to Southern California and joining the LMU family. Choirs under Dr. Harper's direction have performed at annual conferences for the American Choral Directors Association (ACDA), the National Association for Music Education (NAfME), and international performances by invitation with the

Providence College Choirs include Austria, Czech Republic, Spain and Italy. Dr. Harper has received invitations as conductor, clinician and lecturer throughout the United States and internationally with engagements in China, Hong Kong, Argentina, Chile, Costa Rica, Germany, Italy, Indonesia, South Korea, Spain, Sweden, Thailand, Taiwan, and Venezuela. Dr. Harper is a board member of the International Federation for Choral Music (IFCM), and he is the Chair of the ACDA International Activities Committee. Dr. Harper's research interests have led to funded research projects in Germany, France, and Austria. He has published numerous articles in the ACDA Choral Journal, the IFCM International Choral Bulletin, and he is also a contributing author to *Student Engagement in Higher Education: Theoretical Perspectives and Practical Approaches for Diverse Populations*.

**CHRISTOPHER SCOTT MURILLO**

**Assistant Professor  
Theatre Arts & Dance**

Professor Christopher Scott Murillo is a scenic designer, artist, and educator based in Los Angeles, CA. Most recently, his work has been seen at The Kirk Douglas Theatre, International

City Theatre, The Chance Theater, Skylight Theatre Company, East West Players, New Village Arts Theatre, Native Voices at the Autry, The El Portal Theatre, and the Getty Villa (to name a few). Currently, he is an associate artist with Playwrights' Arena serving as their resident scenic designer. Christopher is a member of the Television Academy and United Scenic Artists, Local USA 829. He holds a M.F.A. from the UCSD Department of Theatre and Dance, and a B.A. from the UCLA School of Theater, Film and Television. He is a 2016 recipient of the Princess Grace Foundation Theater Fellowship- Pierre Cardin Award.

**DAPHNIE SICRE**

**Assistant Professor  
Theatre Arts & Dance**

Professor Daphnie Sicre is an Assistant Professor in the Theatre Arts Program at Loyola Marymount University where she will teach directing, and theatre for social justice. Previously, she taught Solo

Performance, Latin American Theatre and Intro to Theatre at BMCC/CUNY and Latinx Theatre and Arts and Social Justice at Marymount Manhattan College. Focusing on

Afro-Latinx performance, she completed her Ph.D. at NYU in Educational Theatre in 2017. Before that, she received her M.A. in Educational Theatre also from NYU, an M.A. in The Teaching of Social Studies from Columbia University, and holds a B.A. from Lehigh University. Raised in Madrid, Spain, but born in Guayaquil, Ecuador to Peruvian and Spanish parents, she shares a deep passion for discovering multiple Latinx and African-American perspectives in theatre. Her latest publication is a chapter in *The Routledge Companion to African American Theatre and Performance* entitled, "Afro-Latinx Themes in Theatre Today". Currently, she is working on two book chapters, "A Time of Protest; Exploring Activism through Newspaper Theatre" in *Dynamic Bodies, Emerging Voices- Racializing and Decolonizing Actor Pedagogy* and "Romeo y Julieta; Staging Shakespeare in the Park in Miami" for *Latinx Shakespeare: Performance, Appropriation and Pedagogy*. When she is not writing, teaching, or conducting workshops on social justice, she can be found directing. This coming year, she'll be directing *In the Heights* at LMU, and last year, she directed Jose Casas's *14*. Select New York City directing credits include: *Shower Me* at the FringeNYC and *Stranger for Stage Black*, where she won the Best Director award and the AUDELCO nominated *Not About Eve*, to name a few.

## Seaver College of Science and Engineering



**SARAH JOY BITTICK**  
**Assistant Professor**  
**Biology**

Professor Sarah Joy Bittick earned her B.S. in Marine Biology and her Ph.D. in Biology from the University of California Los Angeles. Upon completing her Ph.D. in 2017, she was a lecturer in the Ecology and Evolutionary Biology Department where her teaching focused on marine science and incorporated first hand research into the curriculum for undergraduates. Most recently, Dr. Bittick was a two-year Liber Ero postdoctoral fellow at the University of British Columbia Biodiversity Research Centre. Her research focuses on marine community ecology and coastal conservation. She has conducted field research in California, British

Columbia, French Polynesia, the Bahamas, and the Galapagos. Professor Bittick has published original research in selective peer reviewed scientific journals such as *Journal of Ecology*, *Ecosystems*, *Marine Ecology Progress Series*, and *Coral Reefs*.



**CHRISTOPHER CAPPELLI**  
**Assistant Professor**  
**Health & Human Science**

Professor Christopher Cappelli completed his B.S. in Biology at Loyola Marymount University, his Master of Public Health from the University of Southern California, and his Ph.D. from Claremont Graduate University in Health Promotion Sciences, with a concentration in Neurocognitive Science. His research focuses primarily on executive function and implicit/associative memory processes as they relate to appetitive behaviors. Professor Cappelli recently completed an NCI postdoctoral fellowship at USC Keck School of Medicine, where he worked on several projects involving enhancing mindfulness and executive functioning among young adolescents, as well as predictors of substance use among child and adolescent cancer survivors.



**CORY EVANS**  
**Assistant Professor**  
**Biology**

After receiving his Ph.D. in Molecular, Cell, and Developmental Biology from UCLA, Professor Cory Evans conducted postdoctoral training with Dr. Utpal Banerjee, also at UCLA, where he established the fruit fly, *Drosophila melanogaster*, as a new molecular genetic model for blood cell development, and focused on identifying the developmental signals regulating progenitor cell maintenance and differentiation. During this time, Dr. Evans became interested in science education and inquiry-based learning as a pedagogical approach, and collaborated with undergraduates participating in the UCLA Undergraduate Consortium for Functional Genomics (URCFG) to create G-TRACE, a *Drosophila* genetic tool that tracks cell lineages during development. In 2014, he began teaching URCFG students as part of the UCLA Minor in Biomedical Research. Dr. Evans worked with hundreds of early undergraduates to conduct a genomic-scale genetic screen in *Drosophila* to identify new genes regulating



the blood development process. His work has been published in a variety of journals including *eLIFE*, *Nature Methods*, *Nature*, and *Development*. Dr. Evans will continue to use fly blood development as a tool to address a variety of important biological questions, and he is very excited about working with LMU undergraduates to build a research and learning environment that promotes creativity, critical thinking, and overall scientific literacy.

**MAXELLEND E ZIN**

**Assistant Professor**

**Biology**

Professor Max Ezin undergraduate education was in Biology, at Spelman College in Atlanta, Georgia. At the University of Virginia, using frog embryos as a model organism, she worked to understand the movements of cells and the regulation of those movements, when neural cells rearrange to form the central nervous system. As a postdoctoral fellow at Caltech, she continued to look at cell movements in the embryo, this time focusing on the neural crest cells, especially those that migrate to the heart, to septate it. She next moved to Kentucky where she taught as a lecturer in Biology at Eastern Kentucky University and at Berea College. She now has a position in the Life Science Department here at LMU.



**JORDAN FREITAS**

**Assistant Professor**

**Electrical Engineering and  
Computer Science**

Professor Jordan Freitas received her B.S. in Computer Science from Creighton University in 2013 and Ph.D. in Computer

Science from UC Berkeley in 2019. Her research focuses on collaborative data management tools and workflows as a means of more accurate exploration of social issues. She is particularly interested in applications related to sustainable energy and global health. She has also taught classes as an adjunct faculty member of University of San Francisco's Master of Science in Health Informatics program.



**MANDY KORPUSIK**

**Assistant Professor**

**Electrical Engineering and Computer  
Science**

Professor Mandy Korpusek received her B.S. in Electrical and Computer Engineering from Franklin W. Olin College of Engineering. She received her S.M. and Ph.D. in Computer Science from MIT. Her primary research interests include natural language processing and spoken language understanding for dialogue systems. In collaboration with nutritionists from Tufts University, Professor Korpusek used deep learning models to build the *Coco Nutritionist* application for iOS that allows obesity patients to more easily track the food they eat by speaking naturally. Her long-term research goal is to deploy a collection of AI-based conversational agents that improve the health, well-being, and productivity of people.



**JUNYUAN LIN**

**Assistant Professor**

**Mathematics**

Professor Junyuan (Joanne) Lin earned her B.S. in Mathematics from Pepperdine University. She received her M.A. and Ph.D. in Mathematics as well as Computer Science Certificate from Tufts University. She worked as a research assistant and teaching assistant during her studies at Tufts University. Professor Lin's research spans several central topics in applied mathematics and computer science, such as graph mining, network clustering and user recommender systems. Her primary research interests are designing adaptive solvers for linear systems and developing graph algorithms. In 2016, her research team won the Disease Module Identification DREAM Challenge designed and run by researchers in IBM and Columbia University.

## School of Film and Television



**MIKKI KRESSBACH**

**Assistant Professor**

**Film and Television Studies**

Professor Mikki Kressbach holds a Ph.D. in Cinema and Media Studies from the University of Chicago. She joins LMU from Michigan State University, where

she served as a Postdoctoral Teaching Fellow in the Film Studies Program. Her teaching and research spans contemporary film, television, and emerging media, with a focus on the intersection of science, medicine, and popular media. She is currently working on a manuscript exploring how our experiences with digital health technologies impact our perception of health. Her published work includes articles on found footage horror film, nature documentary, and mobile health apps and can be found in *The New Review of Film and Television* and *The Cine-Files*.

**AURORAE KHOO**

**Associate Professor**

**Screenwriting**

Aurora has a B.A. in East Asian Studies from Brown University and an MFA from New York University's Tisch School of the Arts. She has also held a Rotary Fellowship in Taiwan and a Radcliffe Institute Fellowship at Harvard University. She teaches playwriting, screenwriting, and television writing. She has also taught at San Diego State University, New York University, and Carnegie Mellon. Aurora is a television writer who has worked on projects in both the U.S. and China. Her projects include consulting for Disney Asia and various Chinese production companies. In the U.S., Khoo has written for Showtime's dark comedy *Nurse Jackie*; the CBS procedural *Unforgettable*; USA Network's drama *In Plain Sight*; Mitch Hurwitz's Fox comedy *Running Wilde*; YouTube Red's action comedy *The Zombie Musical*, produced by Jed Whedon. She has also written freelance episodes of the CBS shows *JAG* and *Walker, Texas Ranger*, and the ABC Freeform multi-cam *Young & Hungry*. She has sold an original one-hour pilot to Sony Television and developed an original drama pilot with Fox. She is currently adapting a book

into a series for Primary Wave Entertainment and Warner Brothers Television. In addition, Khoo is an accomplished playwright. She has won the Kennedy Center's Edgar L. Stevens Award for promising new American playwrights. Her plays have been produced and read at venues like East West Players (Los Angeles), Playwrights Horizons through the National Young Playwrights Festival (NYC), and South Coast Repertory to name a few.

## School of Education



**FERDINAND (FERDIE) RIVERA**

**Professor**

**Elementary & Secondary Education**

Professor Ferdinand (Ferdie) Rivera received his B.S. in Mathematics Education from the University of

Santo Tomas, his M.A. in Mathematics from the University of the Philippines, and his Ph.D. in Mathematics Education and Cultural Studies in Education from the Ohio State University. He also completed postdoctoral studies at the Center for Development Research, University of Bonn, Germany. His research focuses on the development of structural thinking in mathematics among K-12 learners. He is a recognized expert in school-based mathematics cognition. In 2005, he received the prestigious National Science Foundation (NSF) Career grant for junior faculty that allowed him to establish a solid line of research in generalization and structural thinking in school mathematical contexts. Results of his work have clarified the central role of algebraic thinking across school mathematical domains, and many of his experiments generated strategies for democratizing access to hard-to-reach mathematical concepts. He was a full professor in the Department of Mathematics and Statistics at San Jose State University and served as a program director for NSF's Division of Research on Learning.



# Term Faculty

## Bellarmino College of Liberal Arts



**KYO YAMASHIRO**

**Assistant Professor**  
***Educational Leadership and Administration***

After receiving her B.A. in English Literature from Stanford University, Professor Yamashiro received her M.A. in Educational Administration

and Policy Analysis from Stanford's school of education. She went on to receive her Ph.D. in Social Research Methodology at UCLA's Graduate School of Education. Prior to joining the LMU faculty, she was Associate Research Professor in the School of Educational Studies at Claremont Graduate University, where she also served as the director of the Urban Leadership PhD Program. Her research has primarily focused on applied research, where she aims to focus rigorous and relevant research on key problems of practice, to enable the improvement of student outcomes, such as in her work in a research-practice partnership with Los Angeles Unified School District through the non-profit she co-founded, the Los Angeles Education Research Institute (LAERI). Her areas of research include college readiness; school and classroom climates; choice and charter schools; accountability systems; and defining, measuring, and evaluating progress and success for schools and programs and her work has appeared in such publications as the *Journal of Education for Students Placed at Risk* (JESPAR) and *Educational Measurement: Issues and Practice* and policy reports she has co-authored have been reported on by local news outlets, such as the *LA Times* and KPCC radio. In addition to her research through LAERI, she has conducted research on many of these topics at nonprofit research organizations such as WestEd, SRI International, and other university research centers (CRESST at UCLA and WCER at University of Wisconsin-Madison). She has also dedicated her efforts at improving systems through research by working in large, urban districts, directing evaluation activities in Long Beach Unified School District, and overseeing choice and charter school programs as the Director of School Choice in San Diego Unified School District.



**MARK ANDERSON**

**Visiting Assistant Professor**  
***History and Classics & Archaeology***

Professor Mark Anderson earned his B.A. in History and English literature from the University of California, Los Angeles and his M.A.

in Religion from Yale Divinity School. He received his Ph.D. in Roman History from Yale University. He also taught Greek and Roman history and the history of early Christianity at the California State University, San Bernardino before joining LMU. Professor Anderson's current book project is entitled *Hospitals, Hospices, and Poor-shelters: A Late Ancient Health and Welfare System*, while his recent publications include, "Christianizing the Planetary Week and Globalizing the Seven-Day Cycle" in *Studies in Late Antiquity* (2019) and "Mistranslations of Josephus and the Expansion of Public Charity in Late Antiquity" in *Early Medieval Europe* (2017), which won that journal's prize for the best essay of the year.



**AMANDA APGAR**

**Visiting Assistant Professor**  
***Women and Gender Studies***

Amanda Apgar earned her Ph.D. in Gender Studies from UCLA in 2018. Her research focuses on cultural representations of disability and how they interact with discourses of race, gender, and sexuality. Her current book

project analyzes "special needs" memoirs written by parents of children with disabilities and outlines the emergence of the "exceptional" disabled child-subject. She is also engaged in scholarship on teaching and learning, specifically justice-oriented curriculum and pedagogy.



**MARGARETE FEINSTEIN**

**Visiting Assistant Professor  
Jewish Studies**

Professor Margarete Feinstein earned her B.A. in History from Reed College and her M.A. in Modern European History from Columbia University. She

received her Ph.D. in Modern European History from the University of California at Davis for her research on national identity and state symbols in the postwar Germanies. Prior to coming to LMU, she taught at Susquehanna University, at Indiana University South Bend, and was Research Scholar at the UCLA Center for the Study of Women. At LMU she teaches courses on Jewish history and literature, including the history of antisemitism and literature of the Holocaust. Interested in legacies of the Nazi period, she has published extensively on German national identity and on Jewish Holocaust survivors in postwar Germany. Her current research on revenge after the Holocaust has received support from the National Endowment for the Humanities and the Hadassah-Brandeis Institute.



**JENNY FERGUSON**

**Visiting Assistant Professor  
English**

Professor Jenny Ferguson holds a Ph.D. from the University of South Dakota in 20/21 C American Literature and Creative Writing, Fiction. Her B.A. in English and European Studies is from York

University, and her M.A. is in English Literature and Creative Writing is from the University of Windsor. She is Métis, an activist, a feminist, an auntie, and an accomplice who believes writing and teaching are political acts. Formerly, she was a Visiting Assistant Professor in Creative Writing at Hobart and William Smith Colleges, and in Writing at Missouri Southern State University. She is the fiction editor at *This Magazine*, and the creative nonfiction and à la carte blog editor at *carte blanche*. She is the author of *Border Markers*, a collection of linked flash fiction narratives from NeWest Press, and her short fiction and creative nonfiction essays can be found in *The Malahat Review*, *Grain*, *Big Muddy*, and *Quarterly West* among others.



**ROY A. FISHER**

**Visiting Assistant Professor  
Theological Studies**

Professor Roy A. Fisher earned his B.S. in Physics from California State University Chico and his M.A. in Biblical Languages from the Graduate Theological Union in Berkeley. He received his

Ph.D. in Near Eastern Religions from the University of California Berkeley. Professor Fisher is a Second Temple studies scholar specializing in New Testament and early Christianity. His current research inquiries into the ways in which sacred texts and traditions are taken up within modern and contemporary forms of discourse with their respective technologies of power relations, including the interplay and interference with knowledge relations in the present. Before coming to LMU, he was a Senior Researcher at the Anthropology of the Contemporary Research Collaboratory at the University of California Berkeley.



**GABRIEL FUENTES**

**Visiting Assistant Professor  
Economics**

Professor Gabriel Fuentes earned his B.A. in Economics from San Diego State University and his Ph.D. from the

University of California, Berkeley. Previously, Gabriel was a faculty member at LMU from 1994 to 2000 in the Economics Department. For the past 18 plus years, Gabriel has been working as an international transfer pricing specialist for Ernst & Young, PricewaterhouseCoopers, and Weatherford International.



**KY HENDERSON**

**Visiting Assistant Professor  
English**

Professor Ky Henderson is a writer, editor, and producer who earned a B.S. and M.S. in Journalism from Northwestern University's Medill School of Journalism. He was part of the team that created and launched

VICE News, where he served as features editor and Los Angeles bureau chief. While there, he was awarded the Investigative Reporters and Editors Freedom of Information Award for the 10-part investigative series



"CIA Torture, a Senate Investigation, and the Google Search That Launched a Spying Scandal," and the Southern California Journalism Award for Best Entertainment Feature for "Tequila, Painted Pearls, and Prada—How the CIA Helped Produce 'Zero Dark Thirty,'" a piece that prompted Congress to change regulations governing the CIA's interaction with the entertainment industry. Henderson has also written for a variety of publications including *GQ*, *Rolling Stone*, and *Men's Journal*.

**MARY JO IOZZIO****Visiting Professor*****The Bioethics Institute***

Professor Mary Jo Iozzio, earned a Ph.D. in Moral Theology and an M.A. in Theology at Fordham University, the License in Sacred Theology (S.T.L.) at Boston

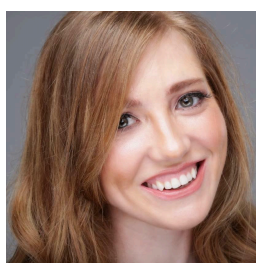
College, an M.A. in Biblical Studies at Providence College, and a B.A. in History at Pennsylvania State University. She is the author of forthcoming *Disability Ethics/Preferential Justice* (Georgetown University Press, forthcoming), *Self-Determination and the Moral Act: A Study of the Contributions of Odon Lottin, O.S.B.* (Peeters Press, 1995), co-editor of *Sex & Gender: Christian Ethical Voices* (Georgetown University Press, 2017), co-editor of *Engaging Disability (Journal of Moral Theology 6.S12, 2017)*, past co-editor of the *Journal the Society of Christian Ethics*, editor of *Calling For Justice Throughout the World: Catholic Women Theologians on the HIV/AIDS Pandemic* (Continuum, 2008), and editor of *Considering Religious Traditions in Bioethics: Christian and Jewish Voices* (University of Scranton Press, 2005). She is author of many articles and has focused her research on the subject of disability, broadly, and theological ethics.

**ANA MARADIAGA BUNKER**
**Visiting Assistant Professor**  
***Modern Languages and Literature***

Professor Ana Maradiaga-Bunker received her B.A. in Spanish from Loyola Marymount University ('96), and a M.A. in Spanish from Cal State Long Beach ('06). She

has been teaching Spanish at numerous public and private institutions for over twenty years. Her

classrooms are filled with students from diverse ethnic, cultural, and economic backgrounds. She has taught students who struggled to succeed in urban public high schools in economically depressed areas as well as those who graduated at the top of their class from prestigious schools. At the end of the day, every single one of her students has a personal story to tell and a contribution to make that helps them to begin to master the complexities of the Spanish Language. Academically Professor Maradiaga-Bunker has also contributed two articles to the anthology *Déjame que te cuente: Historias de Inmigrantes Hispanos*, Vol. II, 2013, Chiringa Press (2013).

**JANELLE PETERS**
**Visiting Assistant Professor**  
***Theological Studies***

Professor Janelle Peters earned her B.A. in Comparative Literature and Religion with high honors from the University of California at San Diego and her A.M. in religion from

the University of Chicago. She obtained a teaching credential in Social Science from the University of California at Riverside. Her Ph.D. at Emory University focused on Second Temple Judaism, early Christianity, and classics. Her book *Paul and the Citizen Body* is under contract with the University of Pennsylvania Press. She has published articles in *Neotestamentica*, *Biblica*, *Journal of Early Christian History*, *Postscripts*, *Journal for the Study of the Pseudepigrapha*, and several edited volumes. She has taught and worked at Emory University, Dominican University, Lake Superior State University, University of St. Francis, American Red Cross of Greater Chicago, and public and Catholic high schools. Her essays have appeared in *America*, *The Atlantic*, *Washington Post*, *Paste*, *Bust*, and *Busted Halo*. She has written a script for TED-Ed on Roman staged sea battles.

**BRIAN REEDY, SJ**
**Visiting Assistant Professor**  
***Philosophy***

Fr. Brian Reedy grew up in Anaheim CA. Although he has lived most of his life in exile from California, he's happy to finally return "home". Fr. Reedy completed a B.S. in Chemistry and Theology at East Texas Baptist University in 1995. He continued

his scientific training earning a M.S. in Chemistry and

Biophysics at Texas A&M University in 1999. Fr. Reedy entered the Society of Jesus at St. Charles College, Grand Coteau LA in 2001. As part of his Jesuit formation, he completed a M.A. in Philosophy with a specialization in ethics at Fordham University in 2006, and he completed an MDiv at Boston College and an STL in ethics at Boston College, both in 2012. Fr. Reedy then moved to Rome and completed his doctorate in ethics (moral theology) at the Pontifical Gregorian University in 2018. Fr. Reedy is also a Lieutenant of the United States Navy Chaplain Corps and has served on the USS Mount Whitney, USS New York, USS Ronald Reagan, USS Chancellorsville, and on land assignments in Port Hueneme, CA; Italy; Germany; Japan; France; Greece; and Croatia.



**YVES VENDE, SJ**

**Instructor**

***Philosophy & Asian and Asian American Studies***

Professor Yves Vendé earned an M.S. in Industrial Engineering in Lille (France) in 2003. After miscellaneous

work and social experiences, he turned to Humanistic Studies. He received a B.A. in Philosophy in 2010 (with a major in French Phenomenology and Hermeneutics) in the Centre Sèvres (Paris) while being an exchange student in Comillas in Madrid (2007-2008). In 2011-2012, he attended The Beijing Center programs and started to get interested in Chinese culture and Confucianism. After teaching French and Latin for two years at Sun Yat-sen University (Guangzhou), he was admitted as a Ph.D. student of Chen Shaoming (陳少明) in the field of Classics and Hermeneutics (經典與解釋). In his dissertation, he investigates Zhu Xi's (朱熹) Method of reading (讀書法) and compares it with Paul Ricoeur's narrative identity and Pierre Hadot's philosophy as a way of life. After graduation in 2018, he came back to the Centre Sèvres as a postdoctoral fellow and instructor of Continental Hermeneutics.

## College of Business Administration



**GREGORY LONTOK**

**Clinical Assistant Professor**

***Information Systems & Business Analytics***

Greg earned his B.B.A. in Information Systems and Quantitative Management from LMU in 2001. A year after graduation, he became the head of technology for Hi-Speed Media, an online advertising and e-commerce firm. In 2006, he co-founded GlobalWide Media, a data-driven online advertising platform. Transitioning from his role as CTO at GlobalWide Media, he was most recently the VP of Data Science. With his wife, Tam '02, he coordinates young adult retreats through the Jesuit Province of California.



**ANTHONY MENENDEZ**

**Clinical Assistant Professor**  
***Accounting***

Professor Tony Menendez is best known as the "Accountant Who Beat Halliburton" and is widely recognized for his decade-long legal battle with the oil giant as a corporate whistleblower under Sarbanes-Oxley. Despite having no formal legal training, he prevailed in the Fifth Circuit Court of Appeals as a pro-se litigant. His case has resulted in significantly increased protections for all corporate whistleblowers. In September 2015, Tony visited LMU as part of the Dreier Chair in Accounting Ethics Speaker Series to share events leading up to the investigation and what it took to fight against a powerful organization. Tony brings nearly 25 years of professional experience to LMU. He is a certified public accountant and certified fraud examiner. A native of Texas, Tony earned a master's degree in accounting from Texas A&M University-Commerce and a bachelor's degree in accounting from the University of Houston. In 2017, he received the Accounting Exemplar Award from the American Accounting Association for notable contributions to professionalism and ethics in accounting.





**ROCHELLE WEBB**

**Clinical Assistant Professor  
Marketing & Entrepreneurship**

Professor Rochelle Webb has specialized in global brand marketing across entertainment, retail and technology sectors. She has worked across brands such as

Activision (Franchise: Call of Duty), Quiksilver (Brands: DC Shoes, Quiksilver, Roxy), Apple (Product: iPhone) and Visa. She is globally recognized for her record-breaking brand and product launches where she won media plan of the year and a Grand Effie for Call of Duty's Black Ops 2 and MW3 product launches. She has run her own marketing and business strategy consultancy, The Dialectic Compound, aiding start-ups with their growth strategy and execution and recently launched a new venture in fashion, Optimist Made. She completed her undergraduate studies at Boston College in Chestnut Hill, MA and recently graduated with her M.B.A. from UC Berkeley, Haas School of Business in Berkeley, CA.



**JESSICA BIANCHI**

**Clinical Assistant Professor  
Marital and Family Therapy with  
sp. In Art Therapy**

Professor Jessica Bianchi earned her B.A. in Art History and Cultural

Anthropology from Arizona State University, received her K-8 General Education Teaching Credential, and then completed her M.A. in Marriage and Family Therapy with a focus in Art Therapy from Loyola Marymount University. After working in community mental health services for five years as an art therapist, Professor Bianchi returned to Loyola Marymount where she received her doctorate in Educational Leadership and Social Justice. Professor Bianchi has developed and directed numerous therapeutic arts services within a multitude of contexts including residential group homes, outpatient clinics, K-high school settings, medical centers, and federal correctional institutions. In addition to teaching, Professor Bianchi works as a clinician in a Los Feliz private practice working with adults and couples.

## College of Fine Arts



**REBECCA AVALOS**

**Instructor**

**Communication Studies**

Professor Rebecca Avalos is a doctoral candidate of Rhetoric and Culture in the Department of Communication Studies at the University of Colorado

Boulder and a Ronald E. McNair scholar. Rebecca holds academic training and expertise in critical race theory, racial logics, citizenship, nationalism, migration, borders, social movement rhetorics, and critical/racial rhetorical criticism. Rebecca Avalos' first educational institution and the site she calls home is Los Angeles, California. Rebecca holds a B.A. and M.A. in Communication Studies and a B.A. in Chicana/o & Latina/o Studies. Rebecca is currently writing her doctoral dissertation on presidential rhetorics, race, and white supremacy.



**LORI FAZZIO**

**Clinical Assistant Professor  
Yoga Studies**

Professor Lori Rubenstein Fazio, DPT, PT, MAppSc, C-IAYT earned her Doctorate in Physical Therapy from Massachusetts General Hospital Institute of Health Professions, her Master of Applied Science from the

University of South Australia and her Bachelor of Science from Boston University. She is a Certified Yoga Therapist through the International Association of Yoga Therapists and is a frequent speaker at professional conferences. Her research interests focus on the intersection and application of the philosophical science of yoga with the clinical science of modern medicine for improving eudaemonic well-being. She pioneered the first yoga therapy internship at the Simms Mann Venice Family Clinic in Los Angeles where interns from LMU gain mentored experience and provide individualized yoga therapy within an integrative medicine clinic for patients suffering from chronic pain. Her mission is to expand this model into other healthcare and educational settings.

## School of Film and Television



**SELWA SWEIDAN**

**Clinical Assistant Professor  
*Art and Art History Studio Arts***

Selwa Sweidan is an artist, designer and researcher. Her work investigates embodied methodologies and artificially intelligent systems to probe

technological innovation. Selwa has conducted design and foresight research across technology sectors, including future automated air traffic systems, smart homes and olfactory technology for EmbraerX, Intel, Johnson & Johnson, the Japanese Ministry of Science and Technology (MEXT), McKinsey Korea and Unilever Japan. Her art work has been exhibited at Artificial Knowing, Bevilacqua Gallery, Center Du Pompidou, HomeLA, Spring/Break Los Angeles, TheOther.online and University Arts Gallery, UC Irvine. She has curated symposia and new media art exhibitions including Performative Computation, Super Radiance and Clustering. In 2018, her research "Knowledge Design — Towards an Inclusive Embodied, AI Practice" was published in the Association for the Advancement of Artificial Intelligence Journal as part of the "Designing the User Experience of Machine Learning Systems" Symposium held at Stanford University. Selwa is currently a "collective resident" at NAVEL, which is a test site for community-driven projects, critical equitable practices, collaborative learning and kinship. Previously, Selwa was a Fellow at George Greenstein Institute; a postgraduate Fellow at ArtCenter College of Design and an Interactive Design Fellow at Fabrica, a communications think tank in Italy. She was awarded "Best Overall" at the Microsoft Design Expo '15. Selwa has been a speaker at AAAI, SXSW, CalTech, Camera Obscura Art Lab, Innovate Pasadena's "Connect Week", IxDA San Diego, Designing Women San Diego, General Assembly, Institute for Art and Olfaction, L.A. Design Festival, USC Games, Microsoft Design Expo and VRLA. Selwa holds an M.F.A. from ArtCenter College of Design and a BA from Smith College.



**BETH DEWEY**

**Visiting Assistant Professor  
*Production***

Born and raised in Alaska, Professor Beth Dewey tells stories that feature a female protagonist and portray a modern take on gender roles. She began her cinematic education working for exploitation

legend Roger Corman on B-movies. She later went on to earn three Emmy nominations for Picture Editing. Her career in the movie industry spans twenty years and includes such forward thinking shows as "Rue Paul's Drag Race." Some of her recent directing work includes "Erasing Eden" on Amazon (starring Breeda Wool) and the scripted TV series "Crazy Love" for Lifetime Movie Networks.





**Office of Faculty Affairs**  
University Hall  
1 LMU Drive, Suite 4820  
Los Angeles, CA 90045-2659  
Tel. 310.258.5459  
Fax. 310.338.1841  
Email. [ofd@lmu.edu](mailto:ofd@lmu.edu)