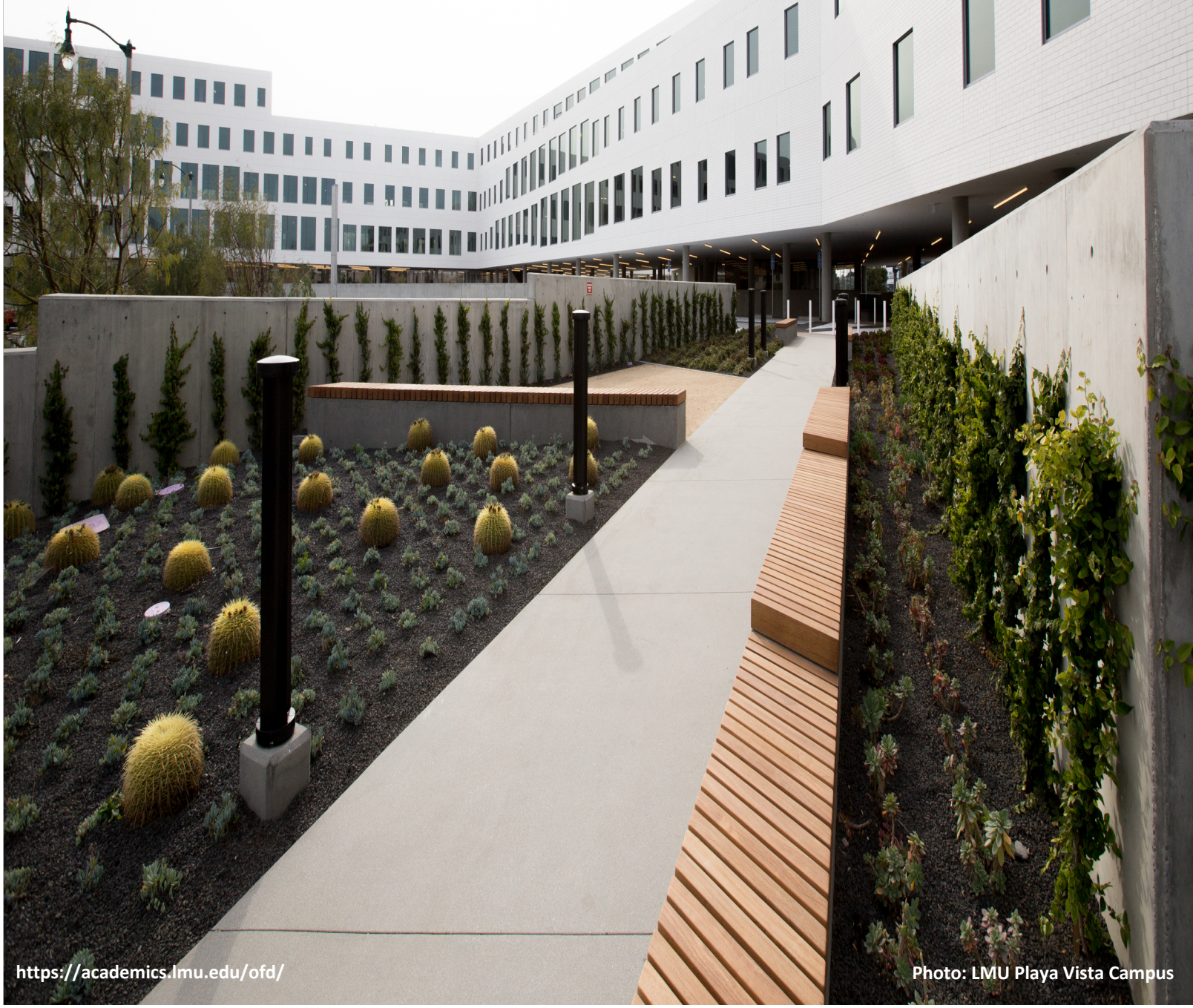


Biosketches

Loyola Marymount University
2020-2021



Loyola Marymount University

NEW FACULTY 2020-2021: BIOSKETCHES



TO THE LOYOLA MARYMOUNT COMMUNITY:

I am pleased to introduce our new faculty colleagues for the 2020-2021 academic year. Our 13 new tenure-line faculty and 31 visiting and clinical faculty bring a breadth of expertise and life experience, further extending the intellectualism and creativity of our highly esteemed and world-class faculty community.

Due to the global pandemic, our new colleagues will not have their initial campus-based experiences in the form in which we are accustomed. New faculty orientation; first-year convocation; school, college, and department meetings; and the Mass of the Holy Spirit, to name a few, will all be conducted remotely. I am confident, however, that the same attention to quality and care will be infused in these events and all that we do this year. In that vein, I express my deep appreciation, in advance, to each of you for the warm welcome, hospitality, and mentorship that you will provide our new faculty. Together, we will show the world that the LMU Community, more than ever, is poised to achieve its Mission of encouraging learning, educating the whole person, and leading lives in the service of faith and the promotion of justice.

I look forward to working with all of you and learning of your great work. May your 2020-2021 year be filled with new friendships, experiences, and opportunities.

Sincerely,

A handwritten signature in black ink, which appears to read "Thomas Poon". The signature is fluid and cursive, with the first and last names being more prominent.

Thomas Poon, Ph.D.
Executive Vice President and Provost

Tenure-Line Faculty

Bellarmino College of Liberal Arts



MAGAEALA BETHUNE
Assistant Professor
African American Studies
Professor Magaela Bethune (she/hers) was born and grew up in the red clay of Augusta, GA on land once occupied by Muscogee and Cherokee

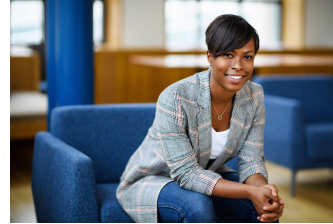
tribes. Drawing from the wisdom of ancestor Audre Lorde – the notion that until we are all free, none of us are free - she believes in the power of direct action for collective liberation. This orientation was shaped during her engagement with institutions, like Vanderbilt University where she obtained a Ph.D. and M.S. in Community Research and Action. She also earned a B.A. in Biology and M.P.A. in Public Administration from Georgia Southern University. Dr. Bethune is an assistant professor in the Department of African American Studies. Her research and teaching are grounded in intersectionality, frameworks for Black liberation and Black feminism, and ecological models of human development. Her current research focus is on adolescent engagement with media and its impact on their sexual health and development.



SANDIBEL BORGES
Assistant Professor
Women's and Gender Studies
Professor Sandibel Borges earned two B.A.s, in Women's Studies and Foreign Languages and Cultures (Spanish Literature), from Washington State University. She

received her M.A. and Ph.D. in Feminist Studies at the University of California Santa Barbara. Professor Borges taught Women's, Gender, and Sexuality Studies at the University of Wisconsin-Eau Claire in 2017-2019 and completed the Carlos E. Castañeda Postdoctoral Fellowship in the Center for Mexican American Studies at the University of Texas at Austin in 2019-2020. She is the author of "Queer Migrant Resistance: LGBTQ

Migrant Latinas Healing from Violence," "Home and Homing as Resistance: Survival of LGBTQ Migrants," and "Not Coming Out, But Building Home: An Oral History in Re-Conceptualizing a Queer Migrant Home."



CHAYA CROWDER
Assistant Professor
Political Science
Professor Chaya Crowder earned her B.A. and M.A. in Political Science from Columbia University. She

received her Ph.D. from the Department of Politics at Princeton University. Chaya Crowder's research and teaching interests include political behavior, race and ethnicity politics, gender and politics as well as social media and American politics. She uses an intersectional approach in her research to explore the ways that attention to race, gender and sexuality have differential effects on political behavior.



SARAH EMANUEL
Assistant Professor
Theological Studies
Professor Sarah Emanuel holds a Ph.D. with Distinction in Biblical Studies with a graduate certificate in Women's and Gender Studies from Drew

University's Graduate Division of Religion. She received her M.A. in Religion from Wake Forest University, a graduate certificate in Ancient Jewish-Christian Encounters from Tel Aviv University International, and a B.A. in English and Liberal Studies from the University of Delaware, where she was inducted into Phi Beta Kappa and named a Woman of Promise. Prior to joining the LMU faculty, Professor Emanuel was Visiting Assistant Professor of Biblical Studies at Colby College (2018-2020) and Visiting Assistant Professor of New Testament at Oberlin College (2017-2018). Professor Emanuel's research attends to the Jewishness of Christian origins, the relationship between text, culture, and identity, and the interplay between traditional historical-critical methodologies and contemporary critical theory (e.g., queer theory, trauma theory, humor theory). She is co-chair for the CoLaboratory at Feminist Studies in Religion, Inc., where she co-hosts the podcast, "Feminists Talk Religion." She is also Content Area Editor of Biblical Studies at Ancient Jew Review. Some of Professor Emanuel's most recent publications include *Humor*,

Resistance, and Jewish Cultural Persistence in the Book of Revelation: Roasting Rome (Cambridge University Press, 2020), “Grace Be to You in the Presence of the Past: Ghosts, Hauntings, and Traumatic Dissociations in Margaret Atwood’s *Alias Grace* and the Gospel of John” (Gorgias Press, 2020), and “On the Eighth Day, God Laughed: ‘Jewing’ Humor and Self-Deprecation in the Gospel of Mark and Crazy Ex-Girlfriend” (Journal of Modern Jewish Studies, 2020). Professor Emanuel is Slytherin Sun Hufflepuff Rising. When she’s not teaching or researching, she can be found training, surfing, cello-ing, and exploring California with her partner, Zoë, and their three best fluffs: Gus, Doug, and Finn.



BRENDA NICOLAS

Assistant Professor

Chicana/o and Latina/o Studies

Professor Brenda Nicolas (Zapotec) received her Ph.D. in Chicana/o and Central American Studies from University of California Los Angeles. Her work looks at the transborder

communal experiences of Zapotec diasporas in Los Angeles. Specifically, she looks at women’s and adult children of migrants’ participation in community sociocultural and political organizing to contest settler colonial logics of Indigenous erasure. Dr. Nicolas has an M.A. in Chicana/o Studies (UCLA) and an M.A. in Latin American Studies with a sociology concentration from University of California San Diego where she completed two master theses. She received her B.A. in Sociology and Latin American Studies from University of California Riverside. Dr. Nicolas is the recipient of several fellowships, including: The Ford Foundation Fellowship, the UC Office of the President Award, the UCLA Dissertation Year Fellowship, and a Eugene V. Cota-Robles Fellowship. She is a former research assistant to UCLA’s Mapping Indigenous Los Angeles (MILA) project— a digital story mapping archive that collaborates with Indigenous communities to capture the many Indigenous histories of Los Angeles. She was born and raised in Los Angeles. Dr. Nicolas will continue her book project at LMU titled, Zapotec Transborder Comunalidad in Diaspora.

College of Business Administration



TYLER DEGROOT

Assistant Professor

Accounting

Professor Tyler DeGroot earned his B.S. in Accounting from California Lutheran

University and his Master of Business Taxation and Ph.D. in Accounting from the University of Southern California. His main research interests are corporate and individual tax planning, tax-related litigation, and corporate governance in not-for-profits. Prior to his Ph.D. studies, Professor DeGroot spent four years in public accounting where he handled tax compliance and planning needs for high-net-worth individuals and their businesses. He is also licensed as a Certified Public Accountant in the state of California.

College of Communication and Fine Arts



DAVID CARTER

Assistant Professor

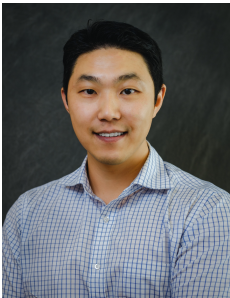
Music

Professor David S. Carter earned his doctorate in music composition at Northwestern University, where his principal teacher was Lee Hyla. Prior to his graduate music studies, he completed a J.D. at the University of Southern California

and a B.A. in English Literature at Yale University. Before joining LMU, he taught at Northwestern and North Park University. His works have been performed or recorded by the JACK Quartet, the International Contemporary Ensemble, Ensemble Dal Niente, Ensemble Court-Circuit, and Ensemble Signal, among others. He won the Iron Composer competition at Baldwin Wallace University, Northwestern University’s William T. Faricy Award, and second prize in the Rhenen International Carillon

Composition Competition. He has had works performed at the Northwestern University New Music Conference (NUNC! 3), June in Buffalo (2014 and 2011), the 2008 Summer Institute for Contemporary Performance Practice at New England Conservatory, Music07 at the University of Cincinnati, and the 2007 Bowdoin International Music Festival. His music theory research focuses on the analysis of form in popular music, and he has presented scholarly papers at the International Association for the Study of Popular Music (U.S.) conference, the College Music Society National Conference, and the Nief-Norf Summer Festival.

Seaver College of Science and Engineering



YONG WOO AN

**Assistant Professor
Health & Human Sciences**

Professor Yong Woo An obtained his bachelor's degree in Athletic Training from Michigan State University in 2009; a master of science degree in Athletic Training at the University of

Florida; and a doctoral degree in Biomechanics and Movement Science (BIOMS) program at the University of Delaware in 2016. He joins LMU from New Mexico State University, where he served as an assistant professor in the Athletic Training program. Dr. An's primary research interests include the role of the brain in neuromechanical links between cognition, emotion, and joint instability. His line of research focuses on the investigation of joint instability and the sensorimotor/neurocognitive characteristics related to neuromusculoskeletal injury. Specifically, he is interested in the relationship between neural adaptation (neuroplasticity) and functional joint stability with particular emphasis on the influence of neurocognitive function on neuromuscular control following an anterior cruciate ligament (ACL) rupture. The goal of this work is for 1) increasing our understanding of the persistent motor deficits associated with joint injury, 2) further scientific development and implementation of clinical and translational novel treatment interventions to

successfully improve long-term joint health and knee function, and 3) reducing the incidence of post-traumatic pathological complications after knee injuries.



EMILY HAWKINS

**Assistant Professor
Physics**

Professor Emily Hawkins received her B.A. in physics from Occidental College in 2014. During her undergraduate studies, she conducted experimental research on cryovolcanic icy slurries at the nearby NASA Jet Propulsion Laboratory (JPL) with the Applied Low

Temperature Physics Group. From her time at JPL, Dr. Hawkins gained a love for planetary physics and went on to earn her M.S. and Ph.D. in Geophysics and Space Physics at the University of California Los Angeles. Dr. Hawkins' research interests involve the experimental study of various geophysical and astrophysical fluid phenomena. Her ongoing work aims to constrain the fluid dynamics inside planets that generate and sustain global-scale magnetic fields. This work has important implications for the detection of life in our solar system and beyond, as a planet's magnetic field protects it from lethal radiation emitted by the Sun or its host star. Dr. Hawkins is also interested in furthering our understanding of the potential habitability of icy moons by examining the unexplored connection between the fluid physics of global subsurface oceans and geologic surface observations. In her spare time, Dr. Hawkins enjoys dancing, running, biking, and spending time outdoors with friends and family.



DELARAM YAZDANSEPAS

**Assistant Professor
Electrical Engineering &
Computer Science**

Professor Delaram Yazdansepas earned her Ph.D. in Computer Science from the University of Georgia, and B.Sc. in Computer Engineering from Qazvin Azad

University in Iran. Upon completing her Ph.D. in 2017, she was a lecturer in the Computer Science Department at UGA where she taught several lower and upper division CS courses. Her research focus lies within ubiquitous computing, pervasive systems and wearable devices. She is particularly interested in the exploration of activity recognition systems using existing sensors and devices for

health applications. Professor Yazdansepas is also interested in Computing Education Research (CER), where she studies the "Teaching" and "Learning" of Computing and pedagogical methods for assessing it through a multitude of techniques such as active learning, peer-learning, and evidence-based learning. Her recent work on CER has been published in SIGCSE, ICER, etc. While she was a graduate student, she worked for the National Park Service as the Data Manager Assistant, creating database, software applications, and preparing detailed data reports for the park managers.

School of Film and Television



KAREN SMALLEY
Assistant Professor
Film and Television
Production

Professor Karen Smalley earned her B.A. and M.F.A. in Film Production at University of California Los Angeles, with a focus on editing and directing. She also attended the Roger Corman Film School, editing four features and serving as postproduction supervisor for the academy-award winning producer. Her editing work includes documentaries, web series, and most recently the independent film Thrasher Road. She has taught at California State University at Long Beach and in the graduate and undergraduate programs at UCLA, where she helped create the Summer Institute for Film Production.



JOHN STRAUSS
Assistant Professor
Screenwriting

Professor John Strauss has been writing and producing television series, feature Films, both live action and computer animated for over thirty years. John's credits as a screenwriter include "There's Something About Mary", "Santa Clause II", "Santa

Clause III", starring Tim Allen and "Free Birds", a computer animated feature, starring Owen Wilson and Woody Harrelson. Box office receipts of the aforementioned films total in excess of a billion dollars internationally. On the television side, John has been an executive producer/show runner on over ten different television series. His most recent credits include the Golden Globe winning series, Mozart in the Jungle. He is currently serving as executive producer for Peabody Award Winning best drama series, David Makes Man, with Academy Award winner Tarell McCraney (Moonlight), for Warner Brothers Television, HBO Max, and the OWN Network. He is currently writing two one-hour drama pilots for Warner Brothers Television, and a third one for Netflix. He recently finished working with Riot Games, adapting their massively multiplayer online game, League of Legends, into a computer animated television series, "Arcane". John is also adapting "There's Something About Mary" as a Broadway musical. John received his B.F.A. from UCLA, and his M.F.A. from The University of Georgia.

Term Faculty Bellarmine College of Liberal Arts



MARK BERNIER
Visiting Assistant Professor
Philosophy

A native Rhode Islander, Professor Mark Bernier received his Ph.D. in philosophy from the University of California Irvine. He studies 19th century thought, with a focus on Kierkegaard and existentialism.

While he enjoys the history of philosophy, his interests are at the intersection of meaning, ethics, happiness, and philosophy of religion. More generally, he sees philosophy as a lifelong pursuit to take on "the most pressing issues facing humanity" (in the words of Pope John Paul II). Because of this, Professor Bernier has focused on hope as a focal point for research and writing, and he sees hope as a fundamental concern in human life. He has published a monograph with Oxford University Press, *The Task of Hope in Kierkegaard*; and he has been a Templeton Grant Research Fellow at Notre Dame's Center for Philosophy of

Religion, as part of the Hope, Optimism, and God initiative. He is currently writing on the relation between suicide and meaning.



KEVIN CURRAN

***Clinical Assistant Professor
English***

Professor Kevin Curran returns to his academic roots as he joins the LMU faculty. He earned his B.A. at Fordham University, where his dean and

residence hall Jesuit was James Loughran, SJ who would become the president of LMU. Dr. Curran also holds an M.B.A. from Arizona State University and a Ph.D. from the University of Oklahoma. During his multi-platform media career, Dr. Curran was a producer for the *Inside Edition* magazine program and coordinated coverage as an assignment editor for television stations in Los Angeles, Phoenix, Tucson, and Oklahoma City. His radio experience includes the NBC Radio Network, *Imus in the Morning* on WFAN in New York, and all-news KNX in Los Angeles. Away from the newsroom, he served as advertising sales manager for a Virginia radio group and operations manager for a Phoenix radio group. Dr. Curran assembled the first all-sports radio station in Phoenix and has served as the radio play-by-play producer of the Los Angeles Kings, Los Angeles Lakers, Arizona Rattlers, and Oakland Athletics in spring training. As a faculty member, Dr. Curran has taught journalism, communications, and business courses at Arizona State University, University of Oklahoma, University of Denver, University of North Texas-Dallas, Grand Canyon University, Park University, Mesa Community College, and Scottsdale Community College. His commitment to student success was recognized when he was named an Outstanding Adjunct Faculty in Arizona's Maricopa County Community College District. His research covers media management, media history, and journalism. His dissertation was a historical and contemporary study of cross-border targeted radio in North America. His research has appeared in the *Journal of Radio and Audio Media* and the *Journal of Emergency Management*.



MARGARETE FEINSTEIN

***Clinical Assistant Professor
Jewish Studies***

Professor Margarette Myers Feinstein is clinical assistant professor in Jewish Studies. She received her Ph.D. in modern European history

from the University of California at Davis. Before moving to Los Angeles Prof. Feinstein was an assistant professor of history at Indiana University South Bend; for the last few years she has been a Senior Lecturer in Jewish Studies at LMU. Interested in the legacies of the Nazi period, she has published extensively on German national identity and on Jewish displaced persons in postwar Germany, including *State Symbols, 1949–1959* (Brill, 2002), *Holocaust Survivors in Postwar Germany, 1945–1957* (CUP, 2010). Her current research about retribution after the Holocaust has received support from the National Endowment for the Humanities.



DEVON GOLASZEWSKI

***Visiting Assistant Professor
History***

Professor Devon Golaszewski earned her Ph.D. in History from Columbia University and also holds a B.A. in History from Wesleyan University. Her teaching and research focus on

the history of medicine and the history of gender and sexuality in Africa. Her current manuscript explores how midwives and other local specialists adapted to the expansion of biomedical health programs in 20th century Mali, highlighting indigenous forms of knowledge around reproduction. Her published work can be found in *Past and Present*. Professor Golaszewski is the co-founder of the *Project Archives des Femmes*, which supports higher education in West Africa through trainings and the creation of an archive of women's activism, housed at Bamako's *Centre Nationale de Documentation et d'Information sur la Femme et l'Enfant*.



GRACE KAO

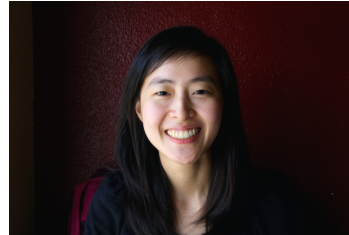
***Visiting Professor
Theological Studies***

Professor Grace Yia-Hei Kao earned her Ph.D. (The Study of Religion) from Harvard

University and her M.A. (Philosophy) and B.A. (Philosophy)

& Religious Studies) from Stanford University. She is the author of *Grounding Human Rights in a Pluralist World* (Georgetown UP, 2011), co-editor of *Encountering the Sacred: Feminist Reflections on Women's Lives* (T&T Clark, 2018) and co-editor of *Asian American Christian Ethics* (Baylor UP, 2015). Her professional activities include service on the Board of Directors of the Society of Christian Ethics (2011-2015), service on the Board of Advisors for the Pacific, Asian and North American Asian Women in Theology and Ministry (PANAAWTM) network (2015-2019), past membership on several steering committees for the American Academy of Religion (since 2005), and current service on the editorial board of the *Journal of Religious Ethics* (2015-present). Dr. Kao has been recognized for teaching excellence at every institution for which she has worked (Harvard, Virginia Tech, Claremont School of Theology). She is currently on leave from Claremont School of Theology, where she is Professor of Ethics and Director of their Center for Sexuality, Gender, and Religion (CSGR). Her goals for AY 2020-2021 include becoming reacquainted with undergraduates—a demographic she has not taught since 2009—completing her book manuscript on the ethical implications of surrogacy (under contract with Stanford UP), and continuing to help her two, school-aged kids navigate the pandemic.

Oaxacan College Initiative, a community-based project that provides mentorship and support for youth preparing to go to college.



ROSANNA LU

Instructor

Theological Studies

Professor Rosanna Lu is a biblical scholar who specializes in Hebrew Bible/Old Testament and the ancient Near East. Her research primarily focuses on ancient sea monsters, the relationship between creation and ritual texts, and religious identity formation. Professor Lu completed her Ph.D. in Near Eastern Languages and Cultures at University of California Los Angeles (UCLA) and has also earned degrees from UCLA (M.A.), Westminster Theological Seminary (M.A.R.), and UC Berkeley (B.A.).

College of Communication and Fine Arts



LUIS SANCHEZ-LOPEZ

Visiting Assistant

Professor

Chicana/o and Latina/o Studies

Professor Luis Sánchez-López received his Ph.D. in History from the University of California San Diego (UCSD) and a B.A. in History from the University of California Los Angeles (UCLA). He is interested in race, Indigeneity, settler colonialism, and social movements in the Americas and is currently completing a book manuscript that examines how Native tribute sustained settler colonial rule in nineteenth-century Mexico. His research has been supported by the J. William Fulbright Fellowship Program and the Center for U.S.-Mexican Studies at the University of California San Diego. He is a member of the Critical Latinx Indigeneities Working Group and co-founder of the



MATTHEW DEWEY

Clinical Assistant Professor

Communication Studies

Professor Matthew Dewey is a Clinical Assistant Professor of Interdisciplinary Media in the Department of Communication Studies at Loyola Marymount University in Los Angeles. Professor Dewey also teaches in the Journalism program and is working to build pedagogical and practice-oriented intersections between the two programs. As a former public access television practitioner, professor Dewey's work looks at telecommunications policy and technology, media geography and urban development, and community storytelling practices to understand political agency through media practices. His latest work can be found in *Flow Journal* and in the journal, *Television and New Media*. Before coming to LMU, Professor Dewey taught in

the Department of Communication and the Urban Studies Program at the University of California San Diego and the School of Journalism and Media Studies at San Diego State University. He teaches classes ranging from video production to critical communication theory. He earned his B.A. in Mass Communication/ Journalism, an M.A. in Communication Studies from Boise State University in Boise, Idaho, and a Ph.D. in Communication from the University of California San Diego.



JOYCE YIP GREEN

Instructor
Marital & Family Therapy

Professor Joyce Yip Green earned her Ph.D. in International

Psychology, Organizations and Systems concentration at the Chicago School of Professional Psychology and received her Master's degree in Marital & Family Therapy/Clinical Art Therapy at Loyola Marymount University. For over 20 years, she has worked as an art therapist serving individuals and families across the lifespan. Her extensive experience includes program oversight of community-based programs serving children 0-5 and their families as well as the mental health programs at several community college health centers in LA County. She has worked on national initiatives to identify cross-sector core competencies for multidisciplinary service providers of the Birth-age 5 population. Professor Green has presented nationally and internationally on her cultural research examining socialization goals and parenting beliefs of Rwandan infant caregivers and recently published an edited book chapter, "The Rwandan way of parenting: Promoting a culture of peace".



KARYN LAWRENCE

Clinical Assistant Professor
Theatre Arts & Dance

Professor Karyn Lawrence is a Clinical Assistant Professor in the Theatre Arts and Dance Departments. She earned a B.A. in Drama and a B.A. in Psychology & Social Behavior from the University of California

Irvine in 2009. She earned her Master of Fine Arts

Degree in Lighting Design from the University of California Irvine in 2012. Karyn is a theatrical and entertainment lighting designer. Selected regional/local theater credits include Center Theatre Group, South Coast Repertory, La Mirada Theater, East West Players, Ebony Repertory Theatre, Boston Court Pasadena, The Pasadena Playhouse, International City Theatre, Antaeus Theatre Company, and Arizona Broadway Theatre. She is the resident lighting designer for the New Swan Shakespeare Festival in Orange County. In addition to lighting for the stage, she is Radiance Lightworks' lead architectural lighting designer for Halloween Horror Nights at Universal Studios Hollywood. Her work has also been seen internationally in Italy, Poland, the Czech Republic, and Romania.



MEGAN PRAHL

Instructor
Theatre Arts & Dance

Professor Meagan Prahl is an actor, artist, and educator originally from Cleveland, Ohio. She earned her B.A. in theater from Case Western Reserve University and her M.F.A. in acting from Brown University. Most recently she taught acting, solo

performance, voice, dialects and speech at the Claremont Colleges. She is excited to join the Lion family as a full-time instructor of theater.



LAURA SMYTH

Instructor
Theatre Arts & Dance

Professor Laura Ann Smyth earned her B.A. in Sociology with a minor in Dance from The University of Calgary and received a Journalism Certificate from Mount Royal University. After relocating to the United States from Canada to earn

her M.F.A. in Dance from the University of California Irvine, Smyth performed with *Regina Klenjoski Dance Company* and went on to become a member of *Donna Sternberg and Dancers* as well as *Jazz Antiqua Dance and Music Ensemble* and *Brockus: RED*. Smyth is currently a Doctoral Student in Dance Studies at Texas Woman's University where her research is centered on the intersection of embodied rhetoric, Black radical thought and dance forms of the African Diaspora, specifically jazz-informed movement practices.

Passionate about the preservation of jazz dance and its role in the academy, Smyth has presented at the *International Association of Blacks in Dance Conference*, *The World Dance Alliance Conference (WDA)*, and the *National Dance Education Organization Conference (NDEO)* addressing these topics. After spending three years as an Assistant Professor of Dance at Cornish College of the Arts in Seattle, WA, Smyth is overjoyed to be returning to Southern California. Smyth, still actively engaged in her own performance career, loves seeking out and creating projects that blur the antiquated boundaries between concert and commercial dance. Smyth holds a Simonson Method Teaching Training Certification (SMTT) and has been a Pure Barre Boutique fitness instructor for eight years.

Seaver College of Science and Engineering



MEGAN GALIPEAU
Visiting Assistant Professor
Mathematics

Professor Megan Galipeau received her B.S. in Mathematics from Loyola Marymount University, during which time, she worked as a

teaching assistant for the Mathematics Department. After graduation, she worked at Raytheon Company as a Configuration Manager and as part of the Embedded Engineering Process Group. She went on to receive her M.A. in Mathematics from Claremont Graduate University, with an emphasis on Mathematics Education. After completing her Single Subject Teaching Credential in Mathematics, Megan taught at Montclair High School for two years. Her graduate research focused on social justice and equity in the high school classroom.



TATIANA KUZMENKO

Instructor
Biology

Professor Tatiana Kuzmenko earned her B.S. and M.S. in Evolutional Biology from Moscow State University in Russia. There she did research on the evolution

of social behavior in ants and how different species of ants adapt various social structures investing into generalized or specialized foraging strategies, for example. After exploring the evolutionary bases of behavior, Tatiana had an opportunity to dive deeper into the molecular mechanisms governing behavior changes at the Molecular and Computational Biology department in the University of Southern California where she earned her M.S. in Molecular Biology. There she explored variations in gene expression inside the brain of ants performing different tasks in the colony as well as between different ant species. That required lots of ant brain surgeries, which is a quite useful life skill. She is certain that from the evolutionary standpoint, social animals, including humans, share some general traits in the ways we learn and remember things. Tatiana enjoys learning and teaching about Neurobiology, and she implements its concepts into her teaching style: engaging students through excitement and curiosity, the true drivers of learning. Over the past eight years, she has been working with the great team of passionate LMU faculty and TAs on her favorite project: research-based General Biology Labs at LMU. She is looking forward to step into the instructor role starting this Fall. Besides Neuroscience Tatiana's interests include medicinal plants, outdoor sports, camping with her family, and exploring nature.

School of Film and Television



ERNIE BUSTAMANTE

Visiting Assistant Professor
Screenwriting

Professor Ernie Bustamante received his B.A. in political science from Stanford University and M.F.A. in screenwriting from University of California Los Angeles. He is a writer, comedian,

educator, and connoisseur of nachos. He is currently writing for an untitled Latinx animated series and developing a half-hour comedy series with Steven Canals ("Pose") attached as Executive Producer. His work explores the intersection of race, politics, and comedy. Ernie began his career as a writer's assistant on the legal comedy-drama "Boston Legal" (ABC). Since then, he has written for multi-camera, single-camera, and animated comedies on broadcast, cable, and streaming networks. He has also sold pilots and movies to ABC, FOX, Freeform, and Nickelodeon, among others. He is a proud Animation Guild Member, WGA member, and previously served as Vice Chair of the WGA Latino Writer's Committee. He is also a proud alumni of the ABC/Disney Writing Program and the Montreal Just for Laughs Festival. He is the creator and showrunner of the digital comedy series "Border Patrol" -- which has been featured at numerous film festivals. Season two premieres this fall. As a comedian, Ernie hosts "The Latino Vote" -- a late night talk show covering politics and media. In 2019, the show was recognized for its social justice impact by the Yes, And... Laughter Lab -- a partnership between American University and Comedy Central. Prior to LMU, Ernie was an Assistant Professor of Theatre at Columbia College Chicago, where he taught courses in the Comedy Writing and Performance program and an Adjunct Faculty member at National University, where he taught screenwriting.



MICHAEL KANG
Visiting Assistant Professor
Film & Television Production

Professor Michael Kang is an award-winning filmmaker who has successfully navigated a variety of challenges in film including

directing multiple scenes in languages he doesn't speak and once directing a cranky bear that was overdue for hibernation. His first feature film "The Motel" premiered at Sundance and was the recipient of the Humanitas Prize and nominated for Best First Feature at the Independent Spirit Awards.



JANET YANG
Clinical Assistant Professor
Film & Television
Production/Business

Professor Janet Yang earned her B.A. from Brown University in East

Asian Studies and an M.B.A from Columbia University, specializing in Media and Entertainment. Professor Yang will be teaching Creative Producing at LMU's School of Film and Television. This may incorporate other disciplines such as Writing, Directing, Marketing and Distribution, and Finance. She began her career in film distribution between the U.S. and China, and then had the opportunity to work with such formidable directors as Steven Spielberg, Oliver Stone, Milos Forman, Kathryn Bigelow, and many others. Some of her best-known credits include THE JOY LUCK CLUB, THE PEOPLE VS. LARRY FLYNT, INDICTMENT: THE MCMARTIN TRIAL, ZERO EFFECT, HIGH CRIMES, DARK MATTER, HIGH SCHOOL MUSICAL: CHINA, and the upcoming Netflix animated feature OVER THE MOON. Yang has received both an Emmy and Golden Globe, and is on the Board of Governors at the Motion Picture Academy, where she was recently elected to Chair the Membership and Governance Committee.

School of Education



MAIA HOSKIN
Visiting Assistant Professor
Specialized Programs in
Professional Psychology,
Counseling Program

Professor Maia Niguel Hoskin, Ph.D. earned her doctorate in Counselor Education and Clinical Supervision at Southern Illinois University, Carbondale and has over seven years school and

mental health counseling experience. Her scholarship explores how popular culture, social media, and mediated images of people of color impact various mental health challenges among minoritized persons such as depression, anxiety, and racial battle fatigue. She is also interested in examining how mediated images of the black community perpetuate systemic racism and antiblack racism. Dr. Hoskin is passionate about training multiculturally conscious counselors on how to utilize culturally safe and relevant interventions with marginalized student populations and has taught courses such as Multicultural

Counseling, Group Counseling, Crisis Counseling, and Counseling Theories.



FR. WAJIRA NAMPET, S.J.

Visiting Scholar

Educational Leadership and Administration

Professor Wajira Nampet, S.J. is a Jesuit educator and psychologist from Japan. Both his educational background and

work experience reveal his intimate bonds to nations both of the east and west. He has had the privilege of having worked and/or studied at top-ranking universities in Thailand, the Philippines and Japan, besides Boston College and Harvard. He earned his B.S. in Mathematics from Chiang Mai University and M.A. in Educational Measurement and Evaluation from Chulalongkorn University, Thailand. He has a Ph.D. in Educational Psychology from Boston College and Ateneo de Naga University, the Philippines. He also holds a S.T.B. and M.A. in Theology from Ateneo de Manila University Loyola School of Theology, the Philippines. In addition, he did his special studies in Psychology at Harvard University. Prior to LMU, he recently taught Psycho-social Anthropology at Sophia

University, Japan. As an educator, he has been the recipient of several academic and professional awards, and as a moral psychologist, he has been invited for lectures or research programs, in line with a relationship between moral judgment competence and personality types, by several foreign universities. His varied publications disclose both his wide-ranging interests in such as education, psychology, anthropology and religion (e.g. Buddhist-Christian dialogue), and his fluency in several languages. Still, one of his hobbies is doing human-like sculpture.

Not pictured

- Amanda Apgar, Assistant Professor in Women's and Gender Studies
- Roy Fisher, Instructor in Theological Studies
- Souyma Mukherjee, Clinical Assistant in Information Systems and Business Analytics
- Rosanne Korenberg, Clinical Assistant in Film & Television Production/Business
- Hugh Blake, Visiting Assistant in Philosophy
- Bill Shaules, Visiting Assistant in Theological Studies
- Arik Greenberg Visiting Assistant in Theological Studies
- Terry Crandall Visiting Assistant in Economics
- Mojgan Morelli Visiting Assistant in Philosophy
- Josette Banks Visiting Assistant in Psychology
- Joshua Kulmac Butler Visiting Assistant in Philosophy
- Michael Patzia Visiting Assistant in Philosophy
- Matthew O'Neill Visiting Assistant in Biology



Office of Faculty Affairs
University Hall
1 LMU Drive, Suite 4820
Los Angeles, CA 90045-2659
Tel. 310.258.5459
Fax. 310.338.1841
Email. ofd@lmu.edu